

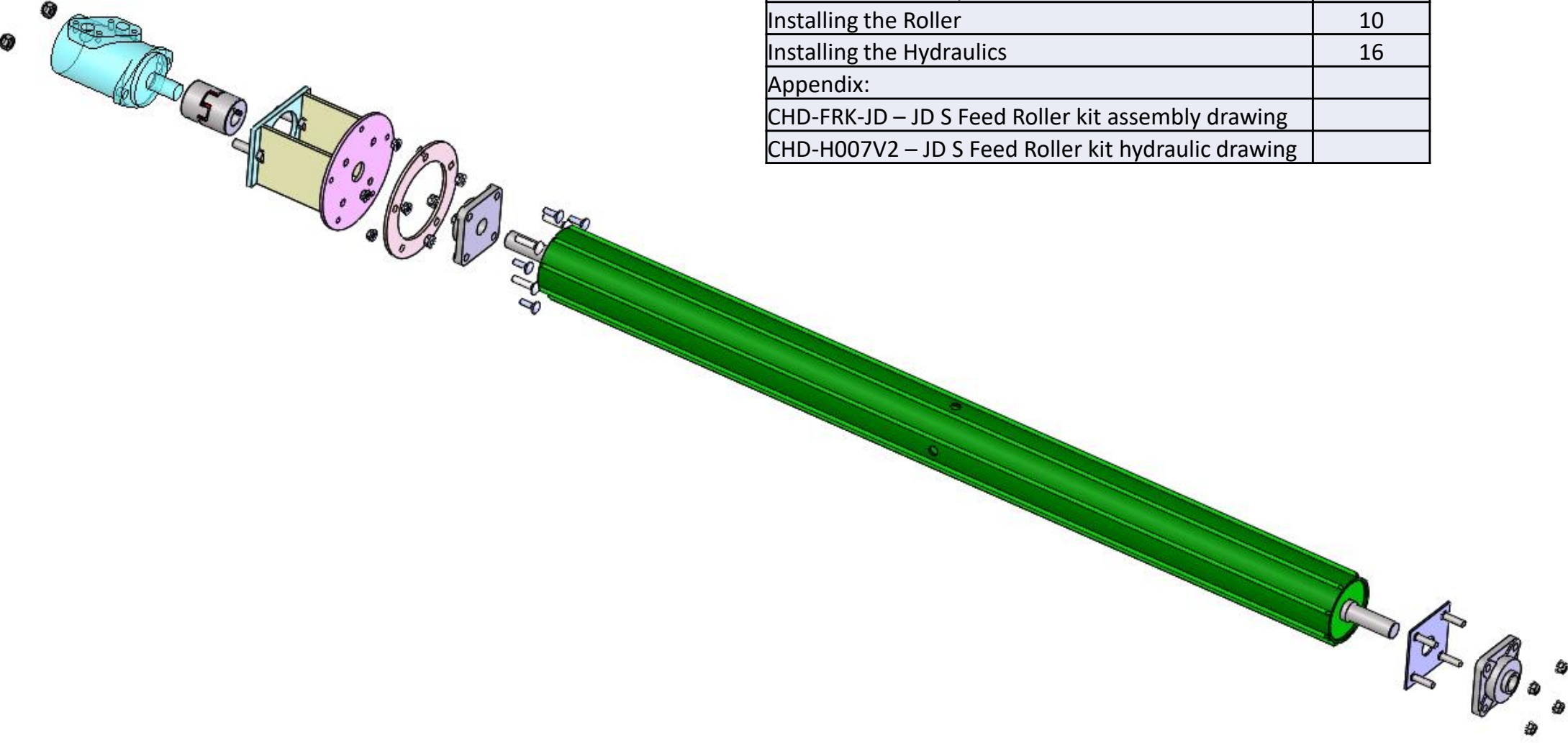
Installation of Chaff Deck Feed Roller Kit for John Deere S-Series



For videos on installation and farmer tips go to www.chaffdeck.com/resources

Contents

Section	Page
Pre-Installation steps	4
Installing the Roller	10
Installing the Hydraulics	16
Appendix:	
CHD-FRK-JD – JD S Feed Roller kit assembly drawing	
CHD-H007V2 – JD S Feed Roller kit hydraulic drawing	





Hydraulic roller kits are only recommended on models:
Standard,
Power Cast,
Premium (without overshot beater)



The Standard (Chopper tail-board type as above) will need a hydraulic pack from your John Deere Dealership

Pre-Installation Steps





Locate this laser cut pattern on the left and right-hand side of the harvester.



Left-hand side

Note: Feed roller kit fits both type of fuel bowls.

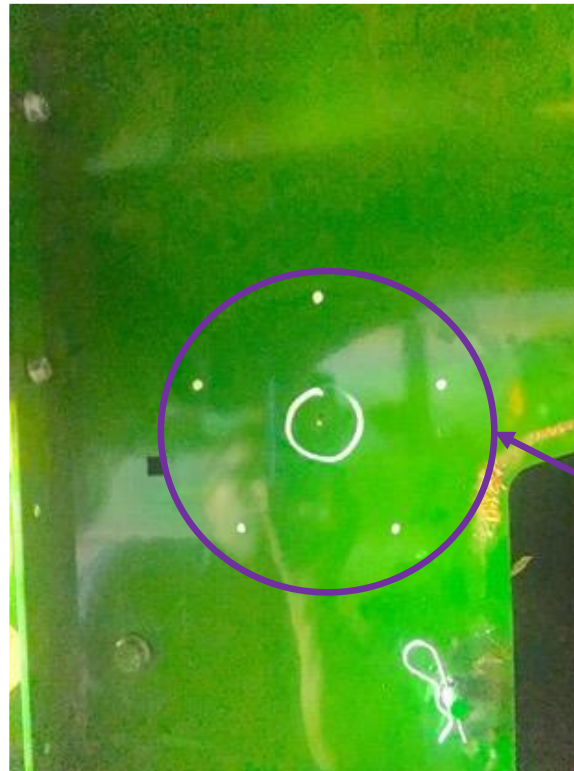


Right-hand side
Hydraulic motor side

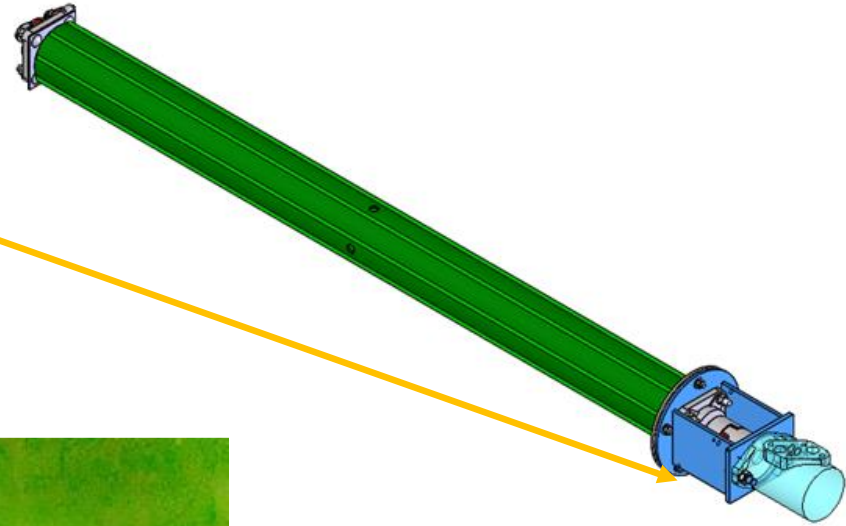


Hydraulic motor mount

Place centre of hydraulic motor mount over the laser marking. Ensure correct orientation.



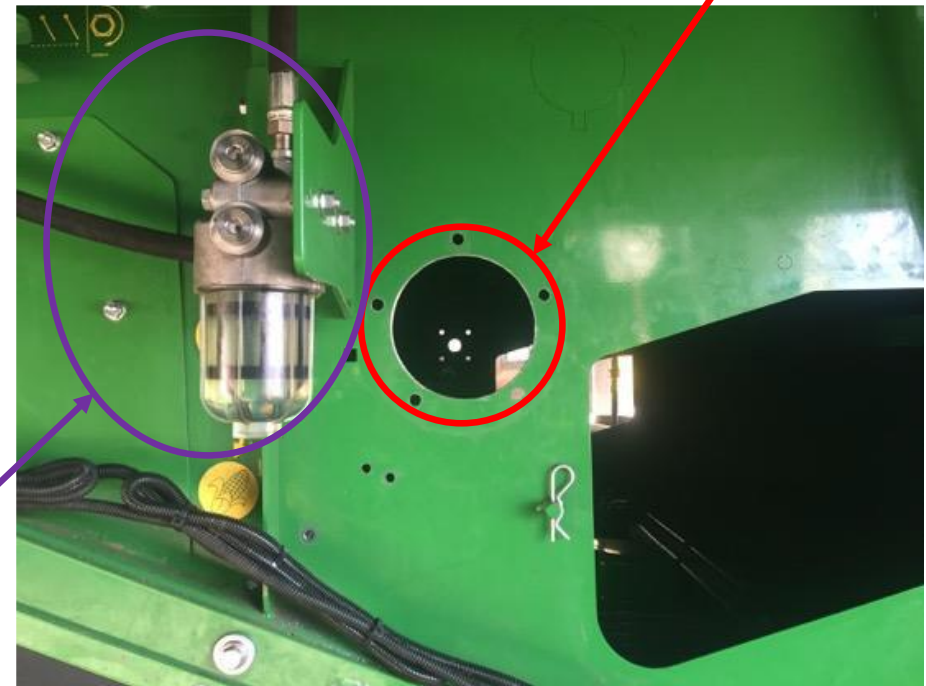
Mark the 5 outer holes. Centre pop and drill 8.5mm holes.





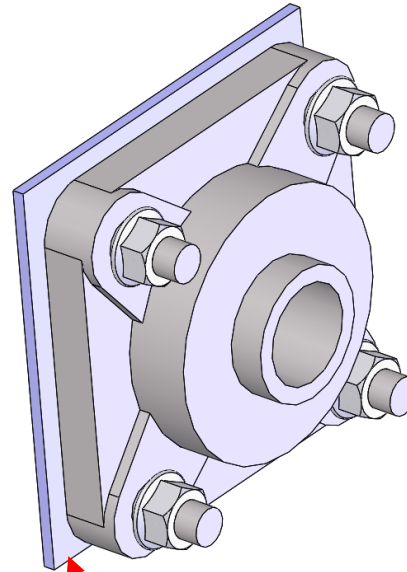
Centre pop the centre of the laser cut mark. Drill a pilot hole smaller than the hole-saw drill bit. Drill a hole of 121mm.

Finished holes looks as shown below.



Keep fuel filter and fuel lines clear, it is not necessary to undo them.

Locate the laser cut mark on the left-hand side of the harvester.



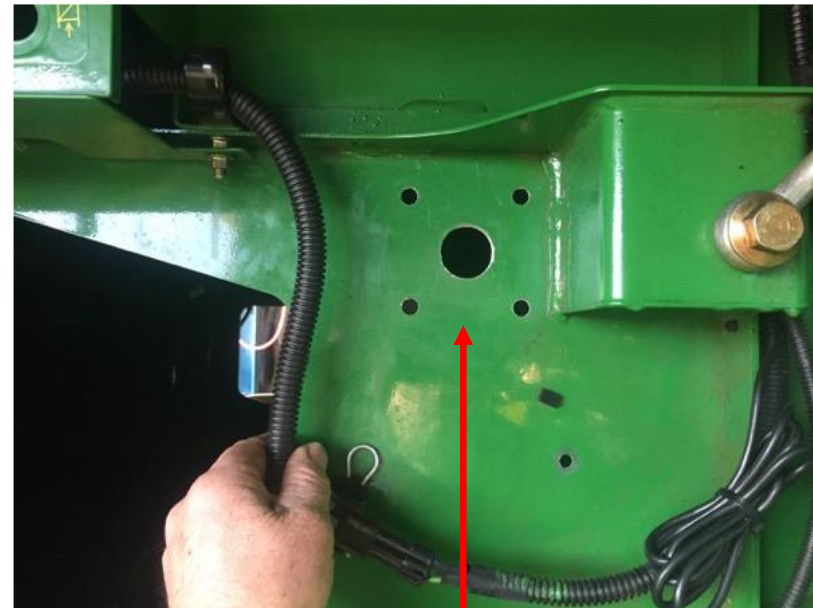
Use cast bearing block with bearings in, to mark four holes. Place the centre of the bearing over the laser cut pattern.

Centre pop and drill 10.5mm holes.





Centre pop centre of laser cut mark, then drill a 30mm hole with a hole-saw.

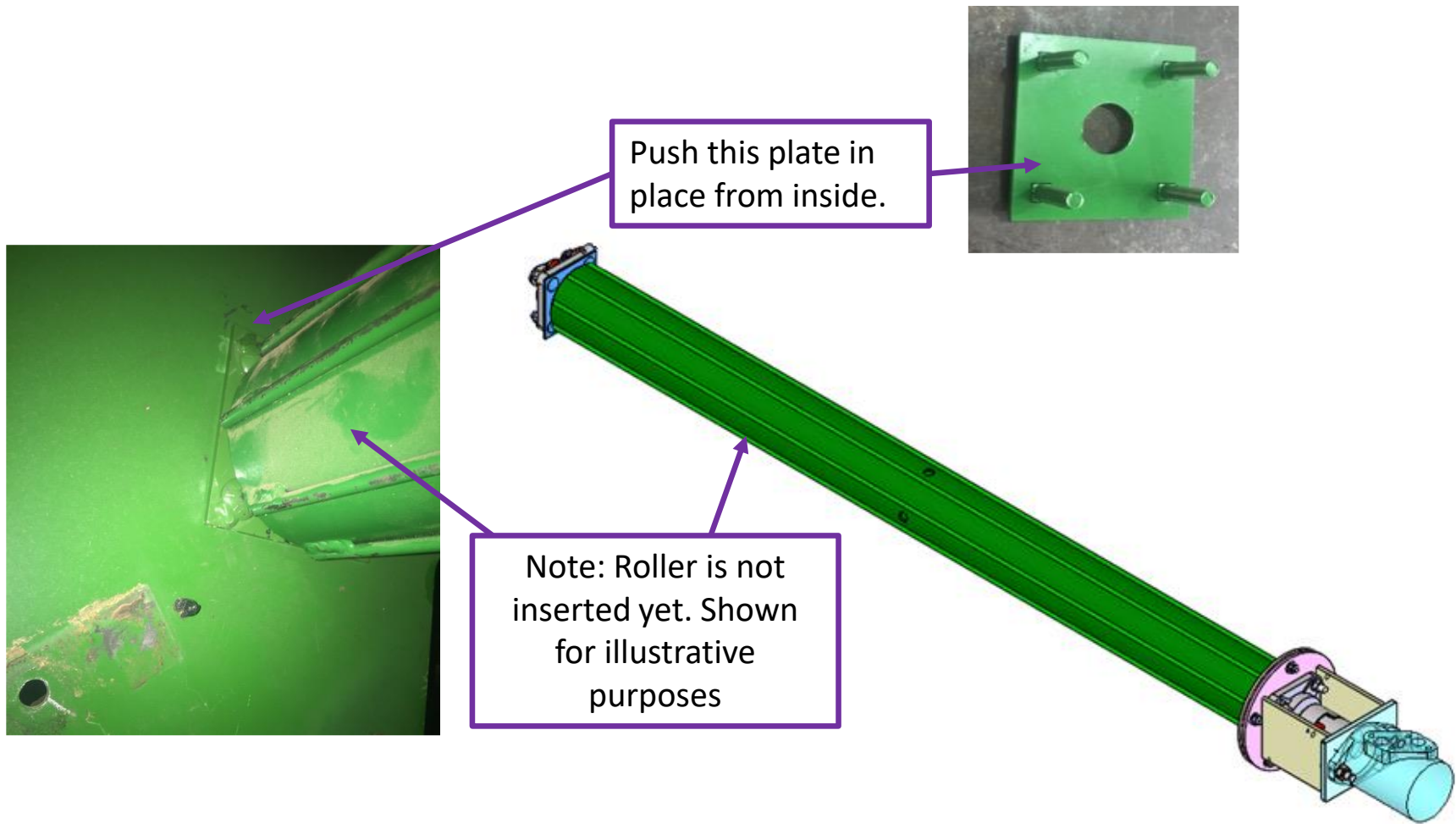


The finished holes look as shown. Remove any burrs in any of the holes.

Installing the Roller

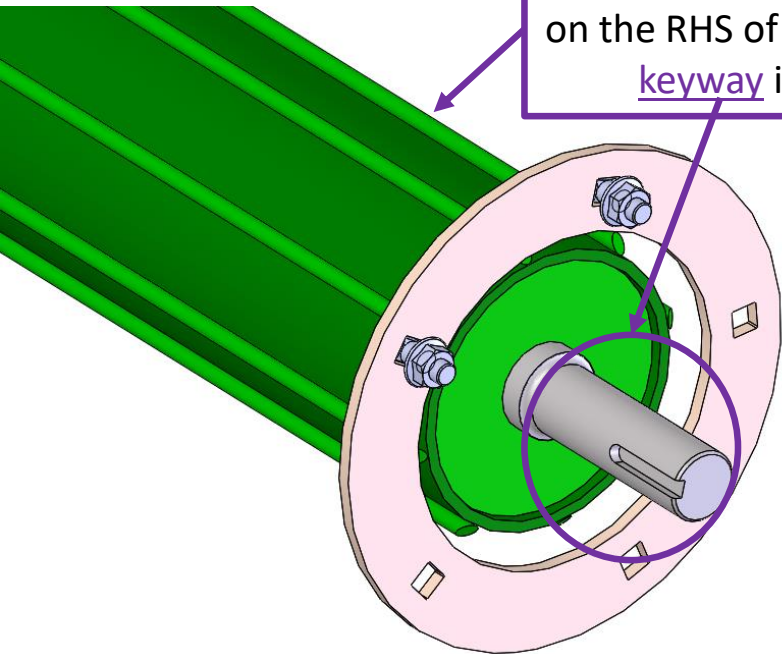


Refer to drawing CHD-FRK-JD in appendix for all items listed in this section



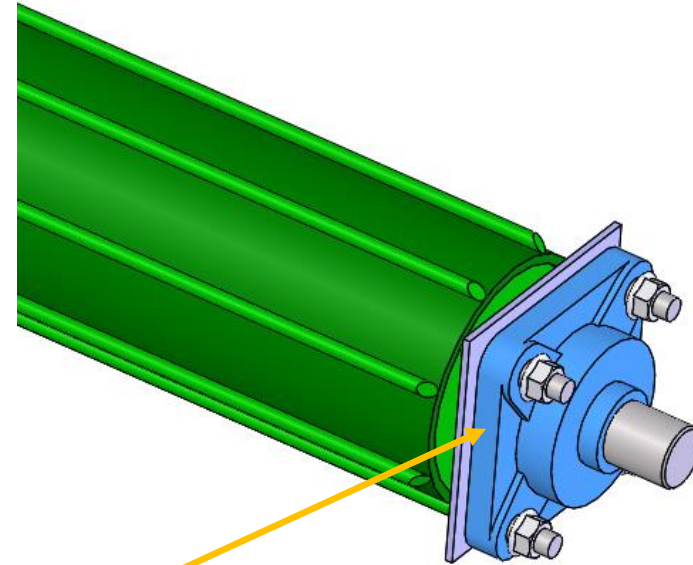


The circular plate attaches from the inside on right-hand side of machine.
TIP: Insert two bolts in-place before inserting roller.



Slide roller in through the large hole on the RHS of machine, making sure keyway is out to the RHS.

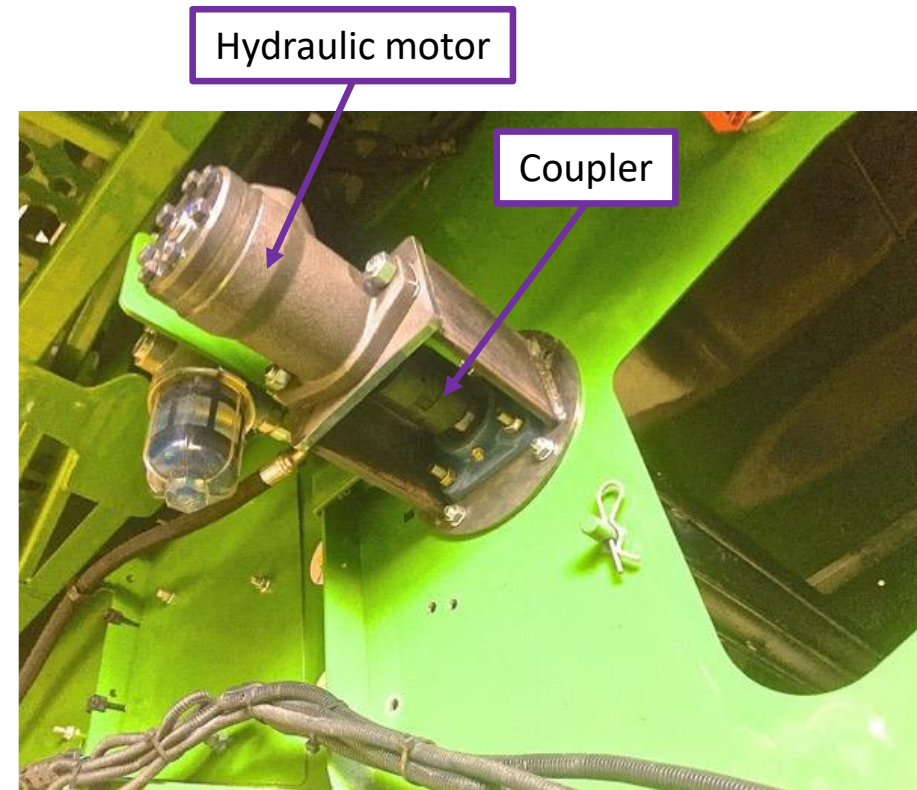
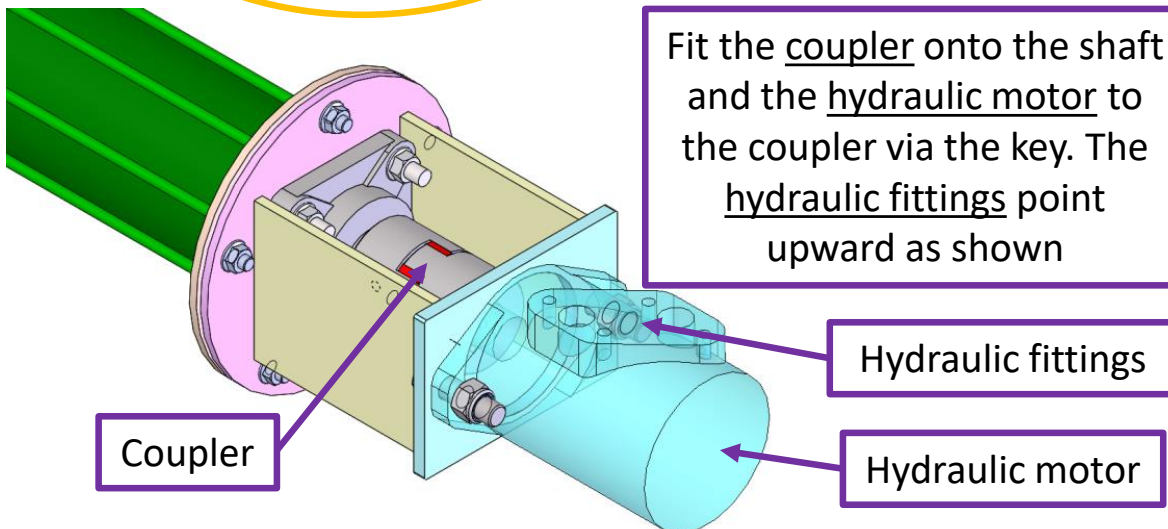
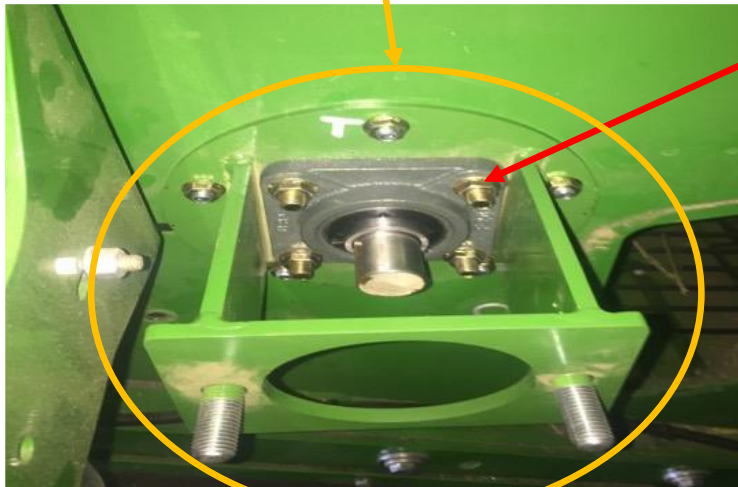


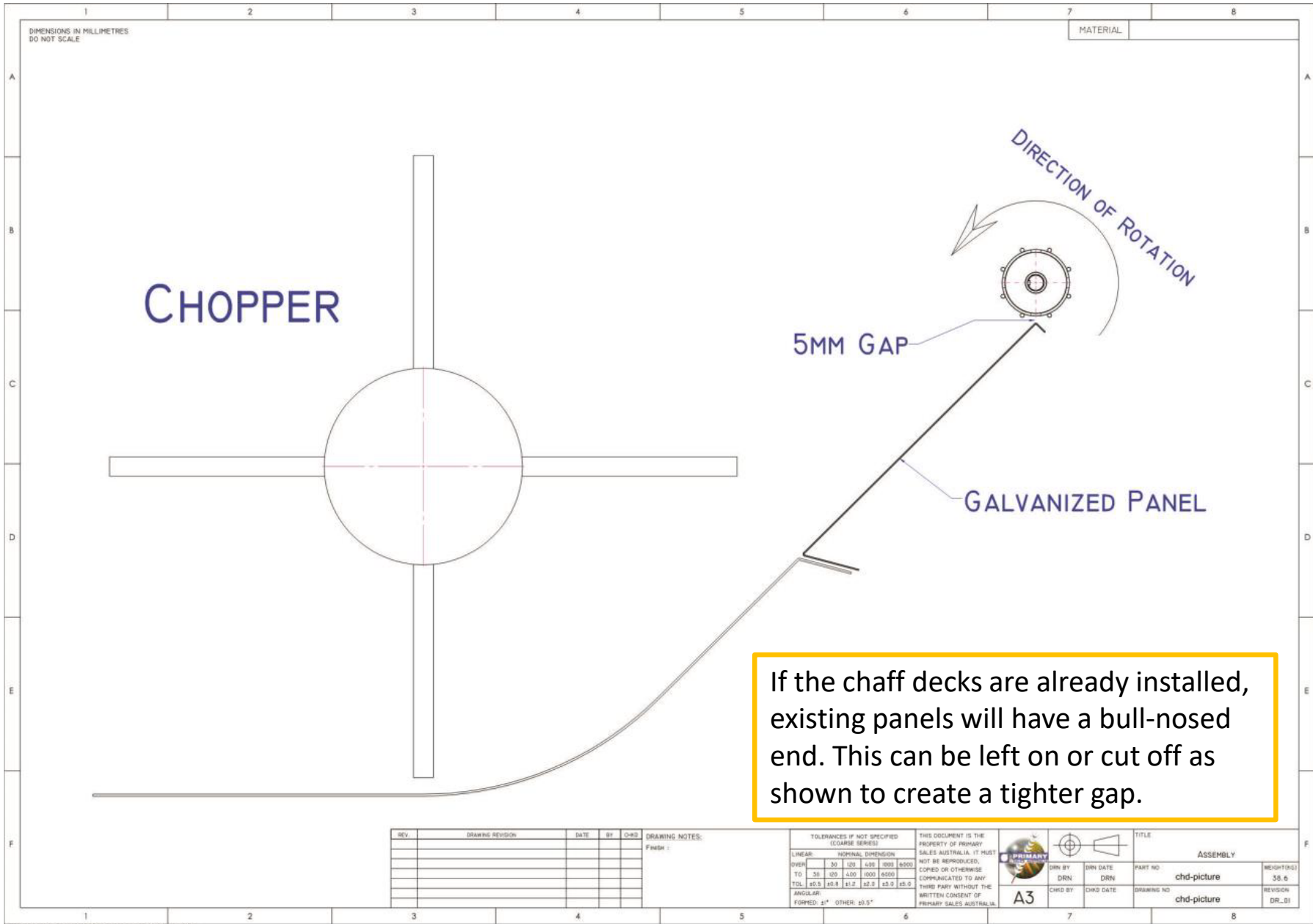


Fit bearing on the left-hand side of the machine. Do not lock grub screws yet.

Fit motor mount, then fit the bearing to the mount and slide onto shaft. Fit and tighten the five 8mm cup-head bolts.

From inside the harvester, adjust the roller so that the distances between the roller and the walls are roughly the same. Tighten grub screws on both bearings.



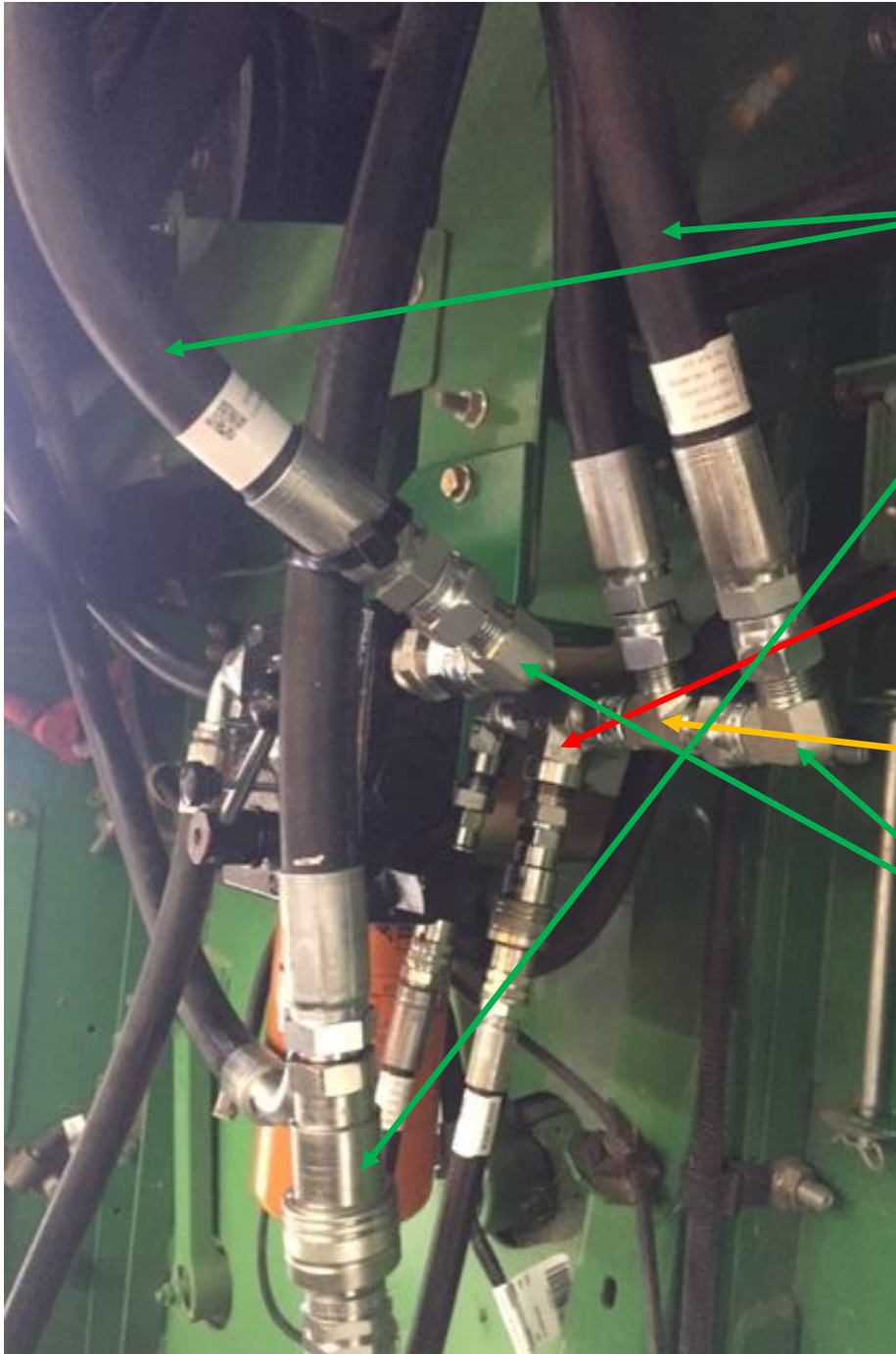


Installing Hydraulics



Refer to drawing CHD-H007V2 in appendix for all items listed in this section



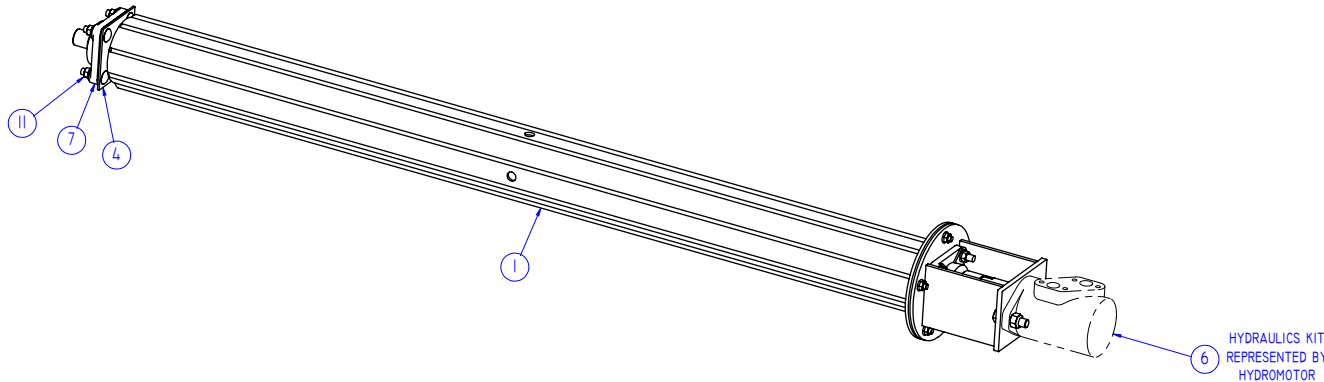


1. Run the two long hydraulic hoses over the engine, zip tie the hoses away from belts.
2. Remove existing loop hose
3. Remove existing quick coupling and connect to feed roller supply hose H1 (connects to A port on hydramotor)
4. Add supplied tee and connect supplied reducer & female quick coupling
5. Move existing tee to here and connect feed roller return hose H2 (connects to B port on hydramotor)
6. Reconnect hose and supplied elbows
7. Install case drain hose H3 onto right hand deck hydramotor
8. Connect chaff decks and ensure that all rollers are spinning the right direction. Chaff decks spin around 2.5 times faster than feed roller (assuming no belt slip).

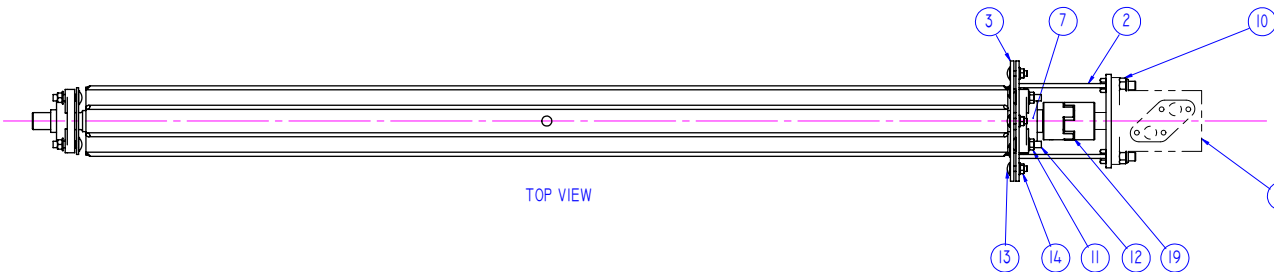
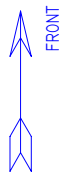
WARNING
Ensure high strength hydraulic sealant is used on all BSPT fittings

DIMENSIONS IN MILLIMETRES
DO NOT SCALE

ITEM NO.	QTY.	PARTNo	DESCRIPTION / MATERIAL
1	1	CHD-1106	FEEDER ROLLER
2	1	CHD-1107	MOTOR MOUNT
3	1	CHD-1108	BACKING PLATE - MOTOR MOUNT
4	1	CHD-1109	BEARING PLATE
6	1	CHD-H007V2	HYDRAULICS, JD S SERIES, FEED ROLLER KIT
7	2	-	FLANGED BALL BEARING UNIT: UCF205-16 (SUITS 1" SHAF)
10	2	-	NYLOC NUT - 1-2" UNC
11	8	-	HEX FLANGE NUT 3-8" UNC
12	4	-	CUP HEAD BOLT 3-8" UNC x 1.5" G8 ZP
13	5	-	CUP HEAD BOLT M8 x 25MM
14	5	-	NUT - HEX SERRATED FLANGE M8
19	1	-	CURVE JAW COUPLING: GEZ4-1A (ID=25.4; RED INSERT = 98 SHORE A) (C/W 1/4" SHAFT KEY & GRUB SCREWS)



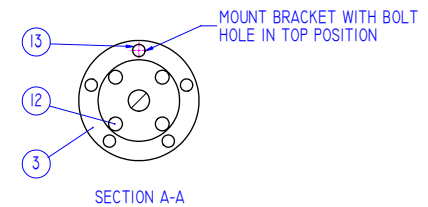
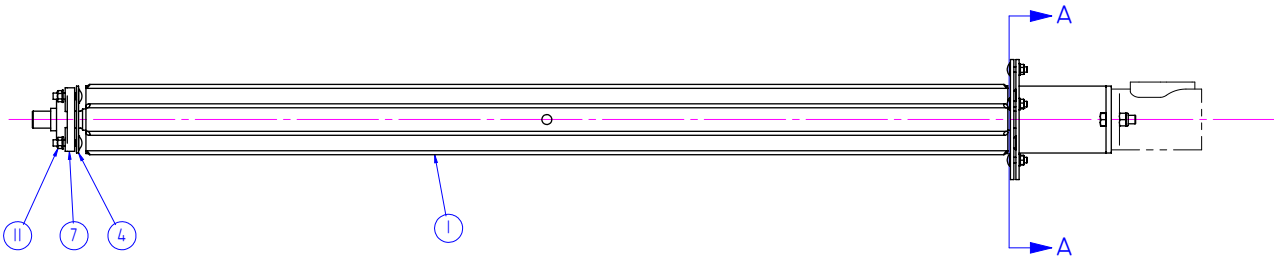
6 HYDRAULICS KIT
REPRESENTED BY
HYDROMOTOR



6 HYDRAULICS KIT
REPRESENTED BY
HYDROMOTOR

(LEFT HAND SIDE)

(RIGHT HAND SIDE)



REV.	DRAWING REVISION	DATE	BY	CHKD
A	ITEM 10 CHG'D TO 1/2" UNC NYLOC	19/09/2017	WBT	AW
B	Added note for pre-2017 kits, item 7 description chgd	12/07/2016	ELKT	SBJ
C	ITEMS 5, 8, 9, 15-18 REMOVED, ITEM 6 CHANGED	3/07/2019	SBJ	SBJ

DRAWING NOTES:
FINISH : NA

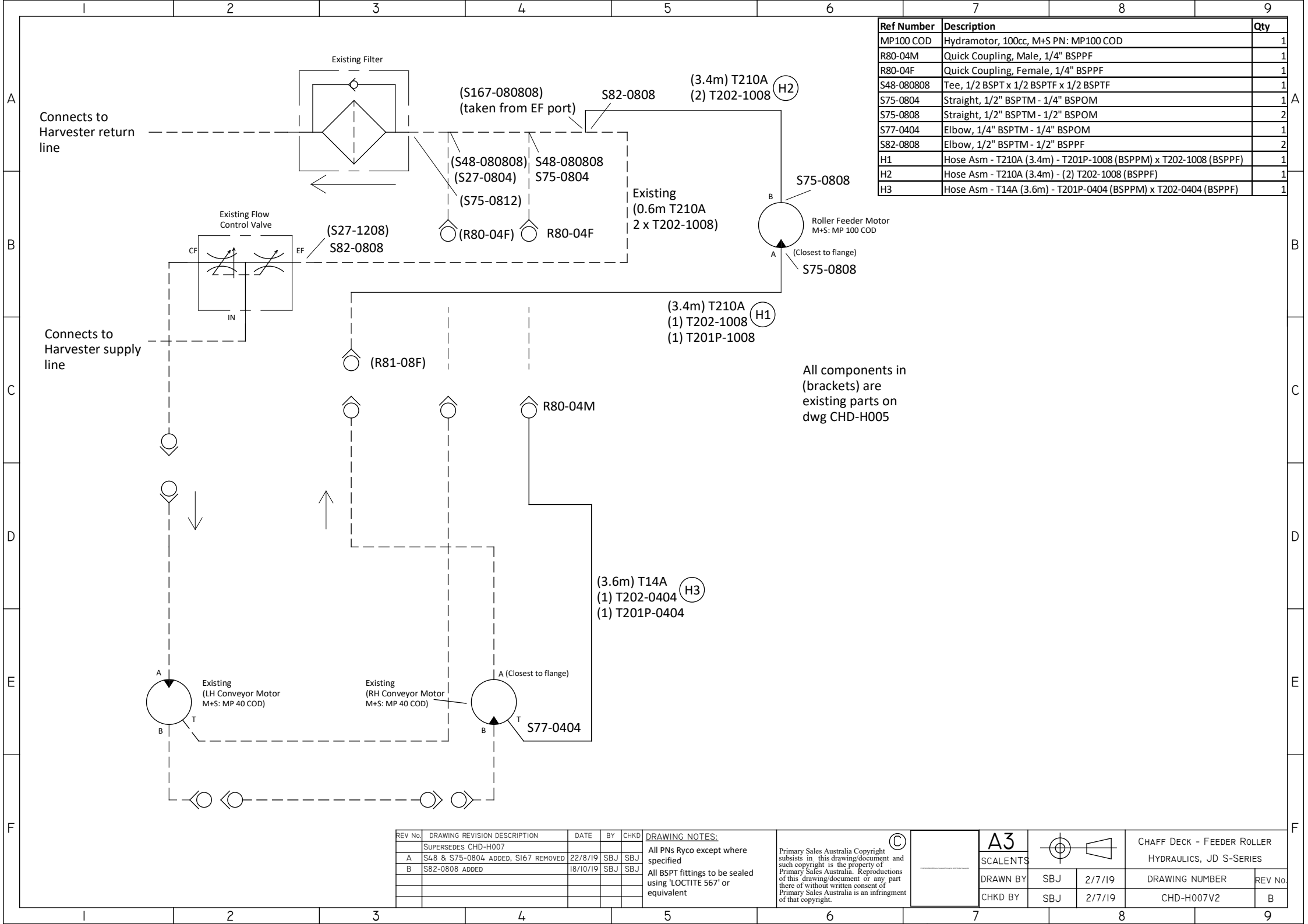
TOLERANCES IF NOT SPECIFIED (COARSE SERIES)	
LINEAR:	NOMINAL DIMENSION
OVER:	30 120 400 1000 6000
TO:	±0.3 ±0.4 ±0.6 ±0.8 ±1.2 ±2.0 ±3.0 ±5.0
ANGULAR:	FORMED: ±1° OTHER: ±0.5°

THIS DOCUMENT IS THE PROPERTY OF PRIMARY SALES AUSTRALIA. IT MUST NOT BE REPRODUCED, COPIED OR OTHERWISE COMMUNICATED TO ANY THIRD PARTY WITHOUT THE WRITTEN CONSENT OF PRIMARY SALES AUSTRALIA.



DRN BY WBT	DRN DATE 11/04/2017
CHKD BY SBJ	CHKD DATE 12/04/2017

TITLE EMAR CHAFF DECK FEED ROLLER KIT - JD S-SERIES		PART NO CHD-FRK-JD	WEIGHT(KG) 35.4
DRAWING NO CHD-FRK-JD		REVISION C	



Ref Number	Description	Qty
MP100 COD	Hydrmotor, 100cc, M+S PN: MP100 COD	1
R80-04M	Quick Coupling, Male, 1/4" BSPPF	1
R80-04F	Quick Coupling, Female, 1/4" BSPPF	1
S48-080808	Tee, 1/2 BSPT x 1/2 BSPTF x 1/2 BSPTF	1
S75-0804	Straight, 1/2" BSPTM - 1/4" BSPOM	1
S75-0808	Straight, 1/2" BSPTM - 1/2" BSPOM	2
S77-0404	Elbow, 1/4" BSPTM - 1/4" BSPOM	1
S82-0808	Elbow, 1/2" BSPTM - 1/2" BSPPF	2
H1	Hose Asm - T210A (3.4m) - T201P-1008 (BSPPM) x T202-1008 (BSPPF)	1
H2	Hose Asm - T210A (3.4m) - (2) T202-1008 (BSPPF)	1
H3	Hose Asm - T14A (3.6m) - T201P-0404 (BSPPM) x T202-0404 (BSPPF)	1

All components in (brackets) are existing parts on dwg CHD-H005

REV No.	DRAWING REVISION DESCRIPTION	DATE	BY	CHKD
	SUPERSEDES CHD-H007			
A	S48 & S75-0804 ADDED, S167 REMOVED	22/8/19	SBJ	SBJ
B	S82-0808 ADDED	18/10/19	SBJ	SBJ

DRAWING NOTES:
 All PNs Ryco except where specified
 All BSPT fittings to be sealed using 'LOCTITE 567' or equivalent

© Primary Sales Australia Copyright subsists in this drawing/document and such copyright is the property of Primary Sales Australia. Reproductions of this drawing/document or any part hereof without written consent of Primary Sales Australia is an infringement of that copyright.

A3				CHAFF DECK - FEEDER ROLLER HYDRAULICS, JD S-SERIES	
SCALENTS		DRAWN BY	SBJ	2/7/19	DRAWING NUMBER
		CHKD BY	SBJ	2/7/19	CHD-H007V2
					REV No. B