

Installation of Chaff Deck for Case with MAV chopper

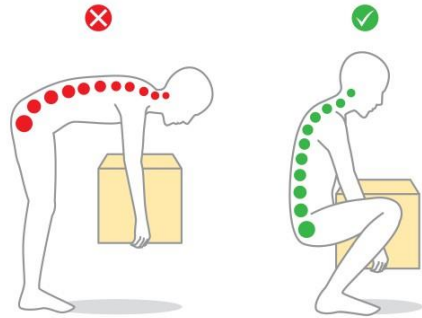


For videos on installation and farmer tips go to www.chaffdeck.com/resources



Contents

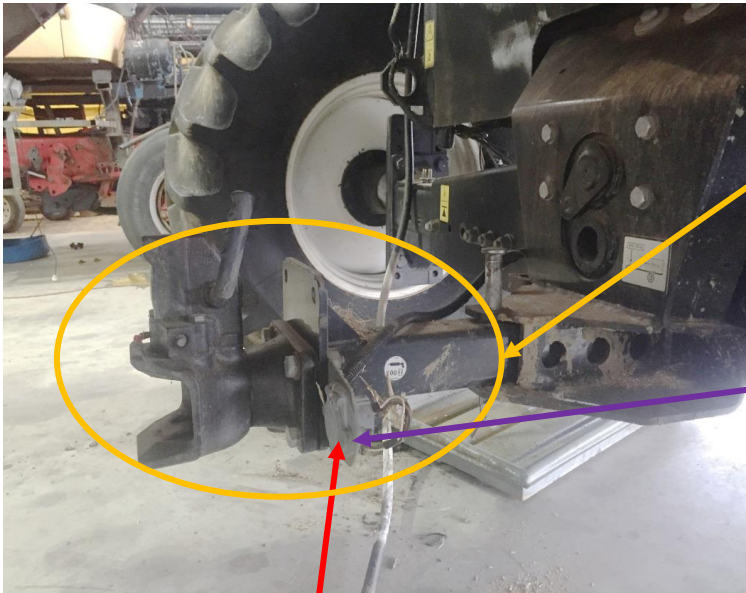
Section	Page
Pre-Installation steps	5
Installing the Frame Assembly	9
Installing the Chaff Decks	11
Installing the Shrouds	13
Installing the Hydraulics	17
Adjusting the Decks	24
Installing the Electrics	28
Maintenance	32
Troubleshooting	33
Appendices:	
CHD-CAM30 – Case MAV kit assembly drawing	
ECD-H011 – Case MAV hydraulic drawing	
CHD-E005 - Sensor wiring drawing	
CHD-CV03 - Conveyor assembly drawing	
Farmscan Jackal quick setup guide	



Please be aware that the following steps
require moving heavy components.
Lift with knees bent and back straight!

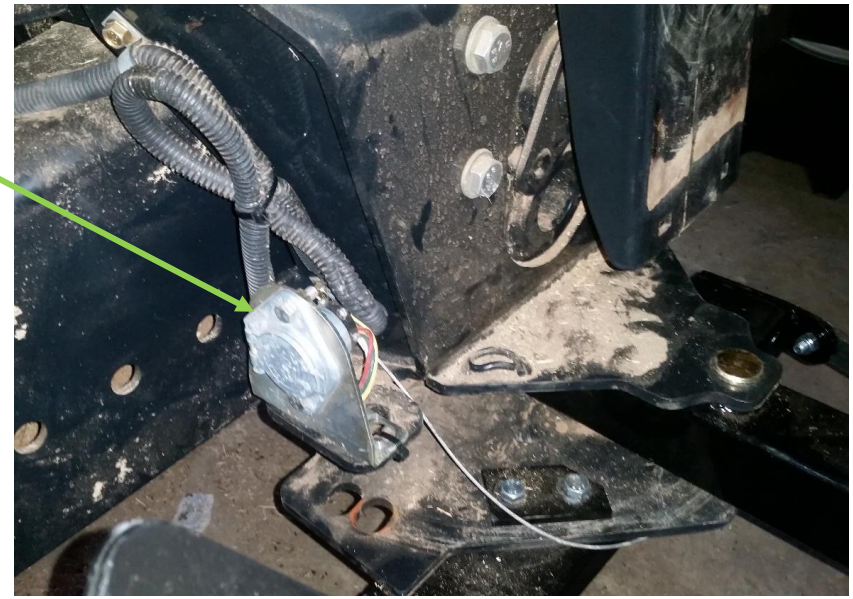
Pre-Installation Steps





Remove the hitch and the two pins holding it up. The pins are to be reused.

Move from
HERE to THERE



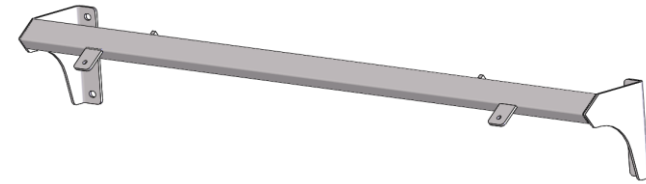
Remove the trailer electrical plug by undoing the two bolts holding it on. Zip tie the cables so they are clear.

Remove shaker tray

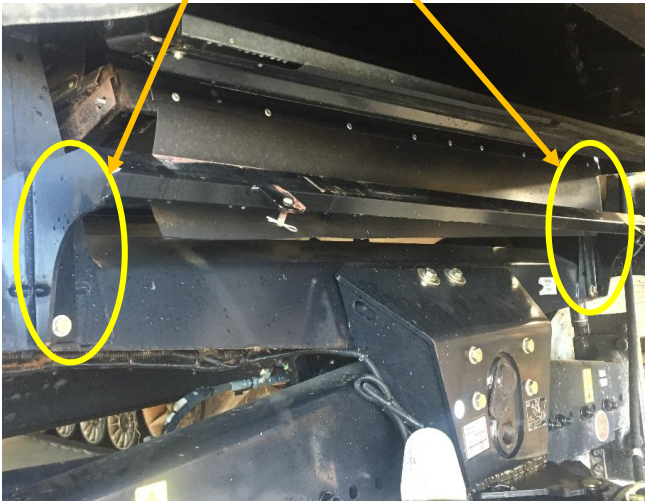
Cut off shaker tray bracket to allow the chute (next page) to fit.
TIP: Use a thin cutting disk so that it can easily be rewelded on in the future if required.



Install Rear Chute mount frame



Fit the rear chute mount frame using the four bolts from the spinners that were removed earlier.



Installing the Frame Assembly



Refer to drawing CHD-CAM30 in appendix for all items listed in this section

Fit deck support frame

Lift main frame up (Item 12) and put the two existing pins in.

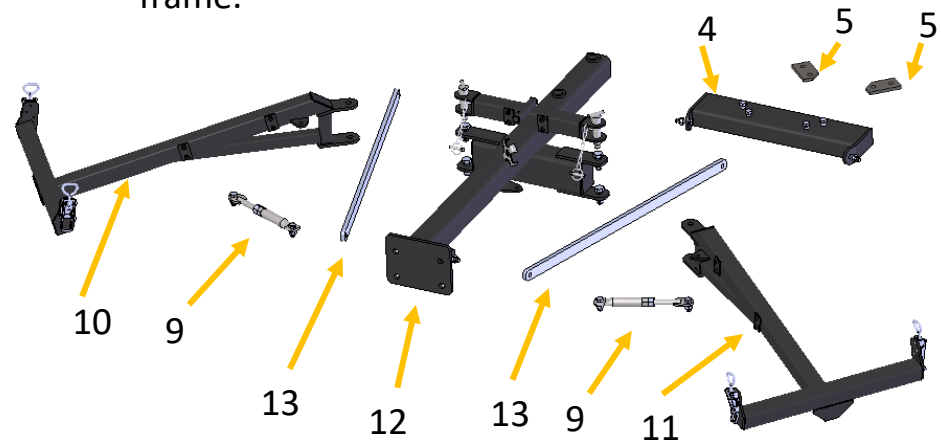
Fit the cross-brace frame (Item 4), two side support bars (Item 13) and tighten

Fit the left & right under deck frames (Items 10 & 11)

Fit the adjuster turnbuckles (Item 9) but leave them loose

At this stage, it is easier to fit one of the hydraulic hoses in the kit. There will be one with two male quick couplers on each end (H2). Get the hose, find the centrepoin, start clamping it on from the centre, then down each under deck frame.

Ensure chaff deck support frame is square with rear axle before tightening bolts



Installing the Chaff Decks



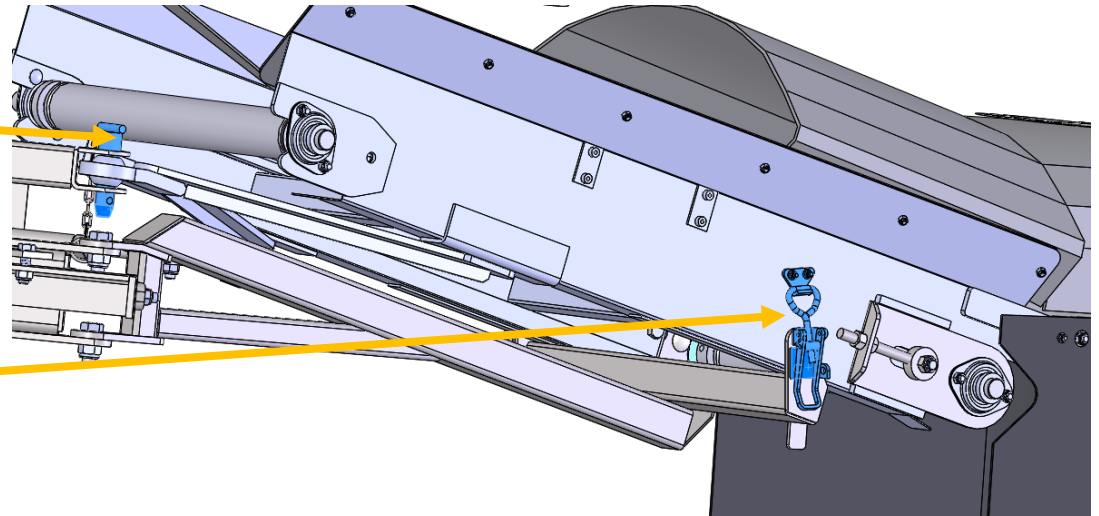
Refer to drawing CHD-CAM30 in appendix for all items listed in this section



Slide decks in
Note: Hydraulic
motors must be in the
centre.

Secure using
pin at front

And
latches at
rear



Installing the Shrouds

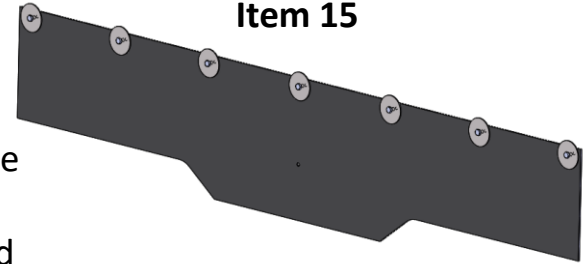


Refer to drawing CHD-CAM30 in appendix for all items listed in this section



Locate the centre of the rear panel of the MAV chopper. Sit the new rear curtain on the decks. Mark and drill 7 x 6mm holes and bolt on the rear curtain

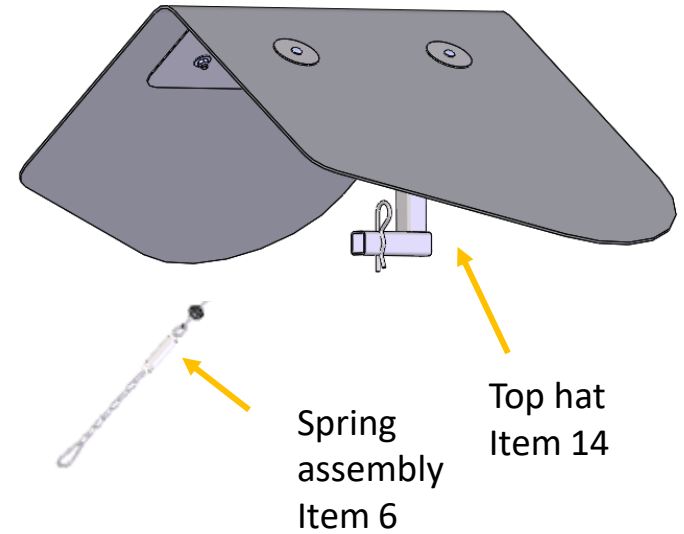
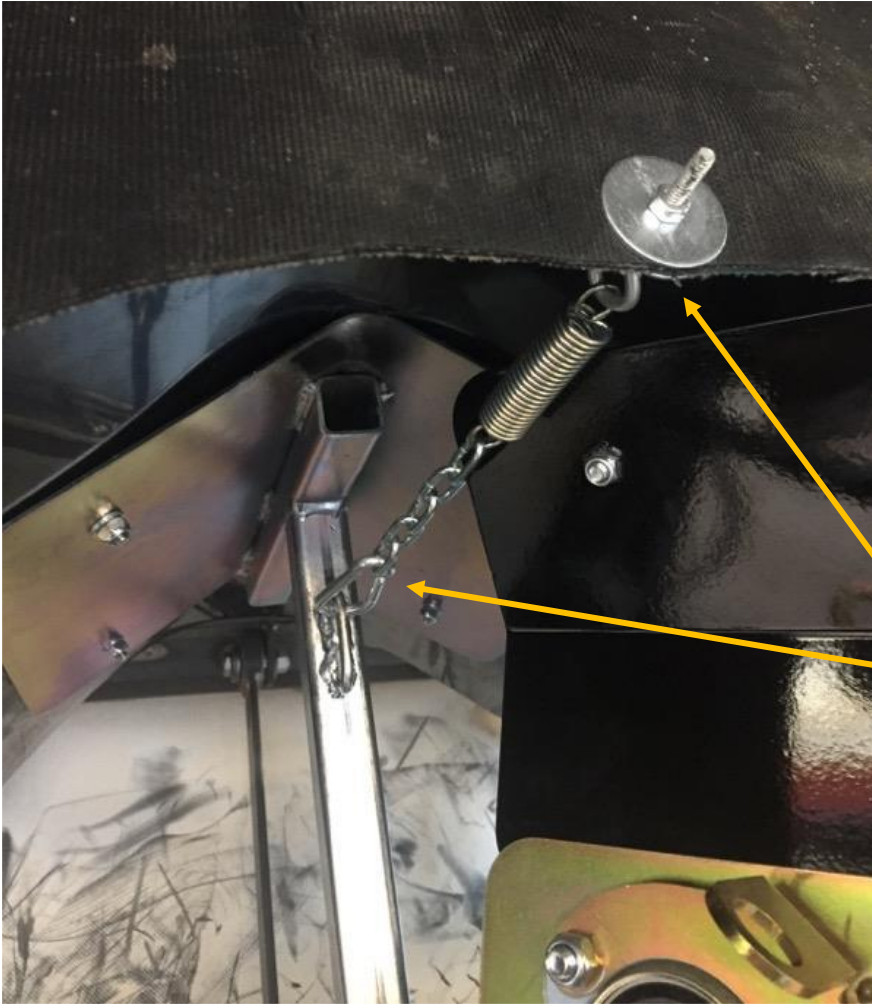
Install rear curtain Item 15



Rear curtain



Fit top hat & spring assembly

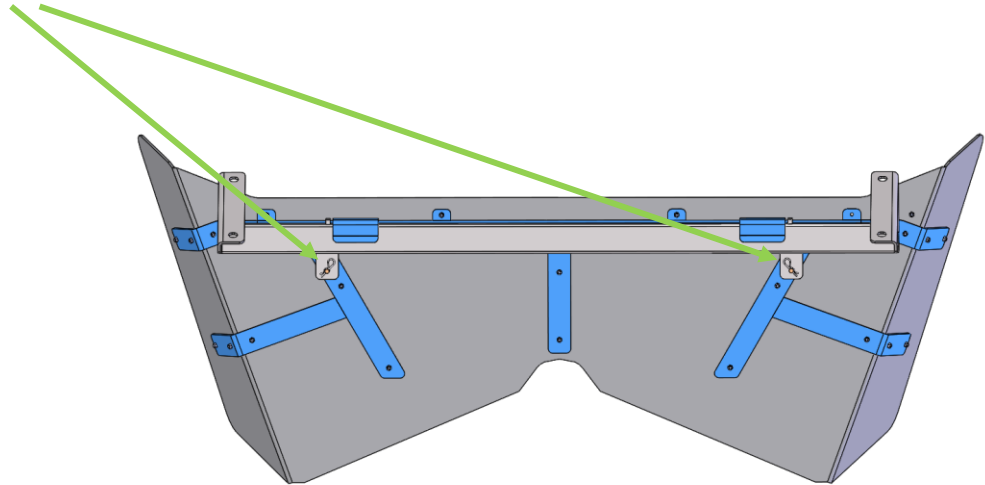


Connect rear curtain and top hat with spring assembly.

Cut the chain to adjust tension as needed. The spring should have slight tension on it to create a good seal between the top hat and rubber curtain.

Install Rear Chute

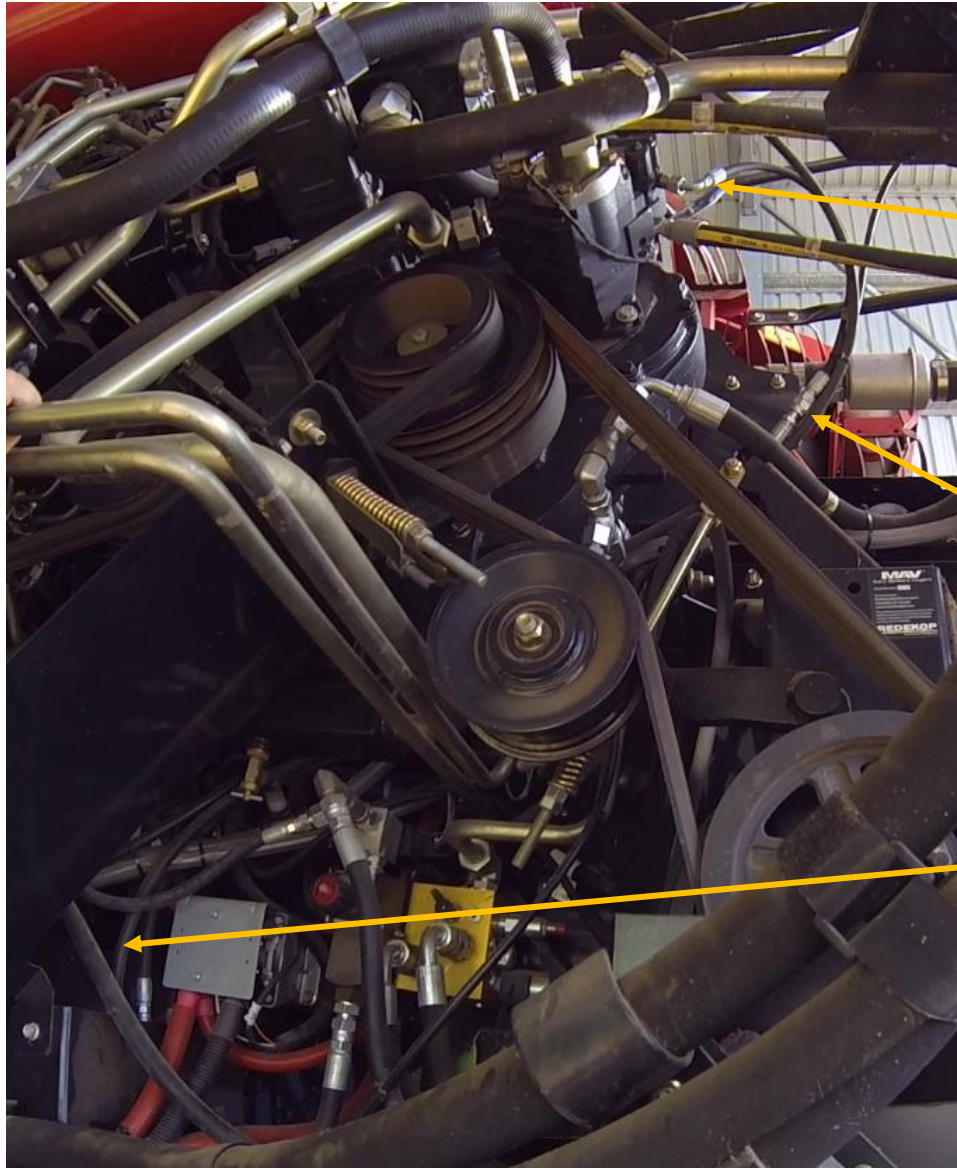
Slide rear chute in and fit pins to mount frame previously installed.



Installing the Hydraulics



Refer to drawing ECD-H011 in appendix for all items listed in this section

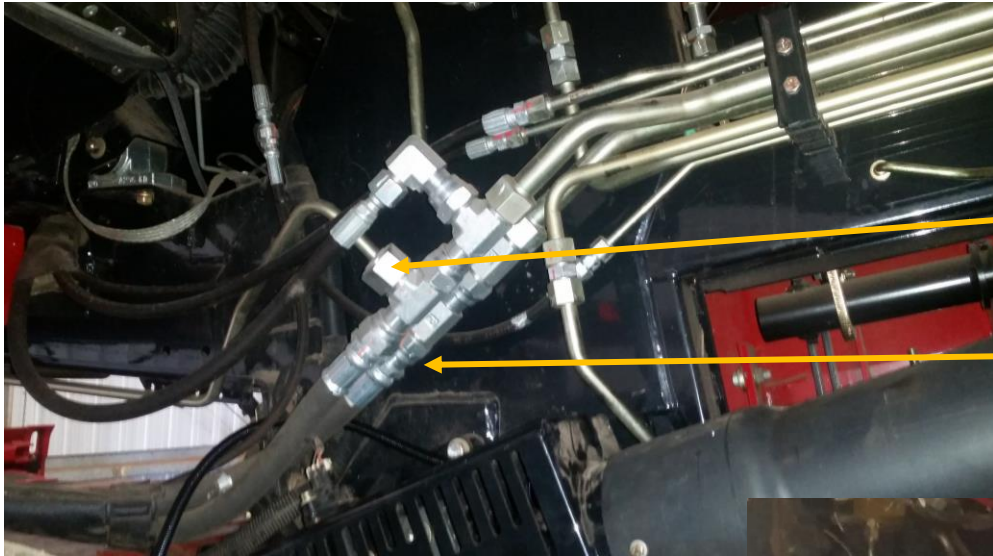


**Install pump load sense hose
H11**

Original hose attached to load
sense port on pump

New H11 hose joins
to existing hose
here

Hose loops around to the new
shuttle valve to be installed as
per the hydraulic schematic in
the Appendix



**Install supply & return hose
30/40 Series machines**

Remove cap

Disconnect
hose

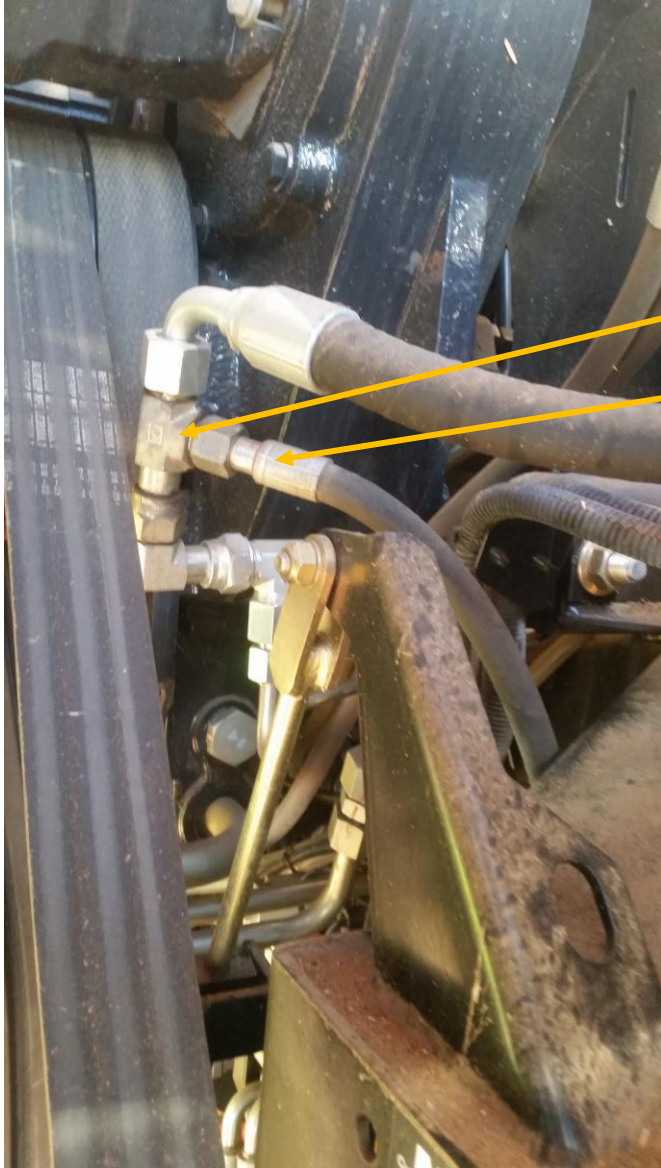
BEFORE

Install return
hose H5

Insert new tee
& install supply
hose H8



AFTER



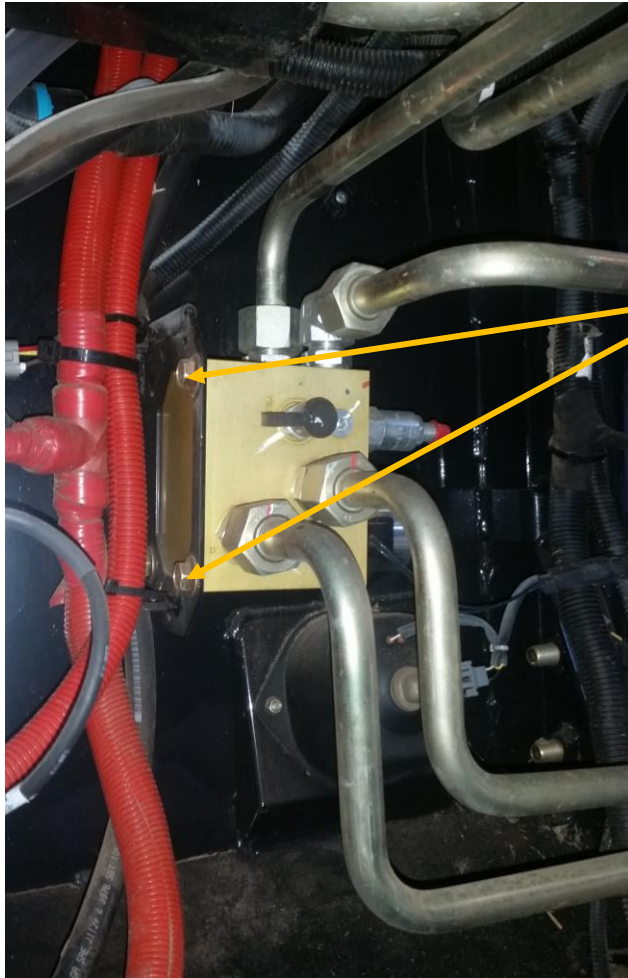
**Install case drain hose
H7**

Insert tee

Install case
drain hose



Install valves

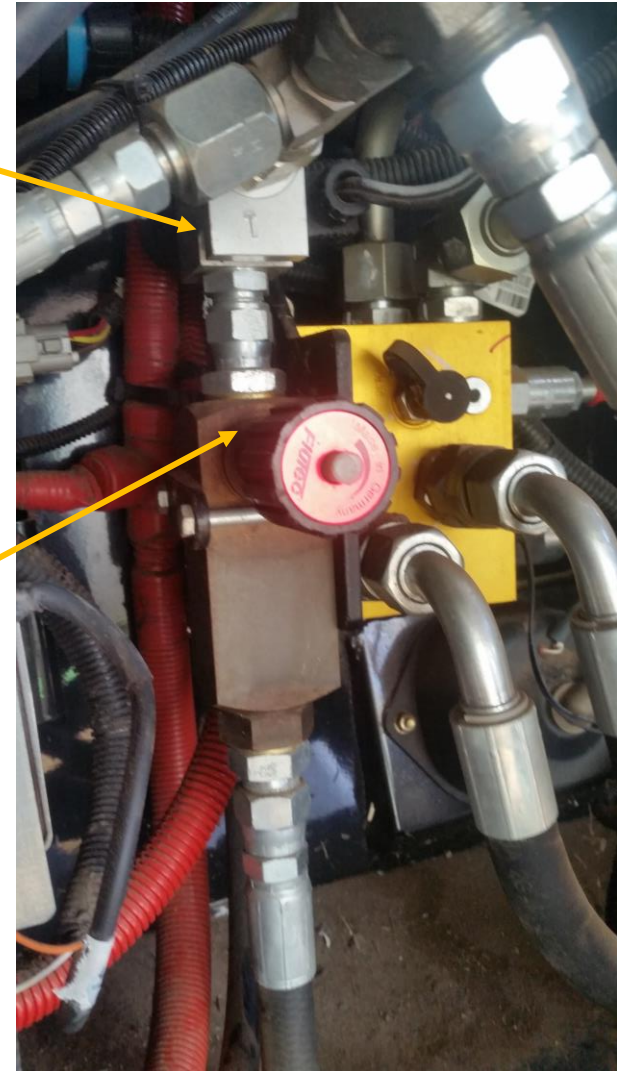


BEFORE

Attach new solenoid valve

Remove 2 bolts and attach new bracket

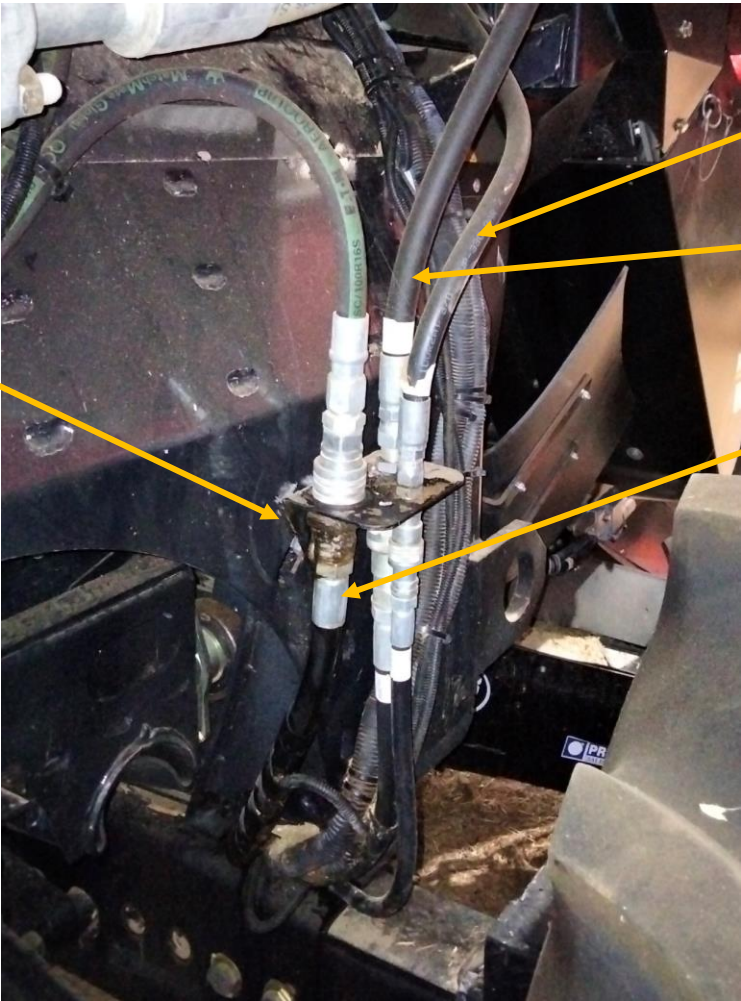
Attach new bracket and flow control valve



AFTER

Install coupling mount bracket

Install coupling
mount bracket



Case drain hose (to LH deck)

RH deck hose

LH deck hose

Hydraulic setup tips:
Check that the 'Low pressure standby' on the pump is set at above 350psi.
If decks speed up when auxiliary hydraulics are running then check that the supplied flow control valve is working correctly.

Adjusting the Decks



Refer to drawing CHD-CAM30 in appendix for all items listed in this section



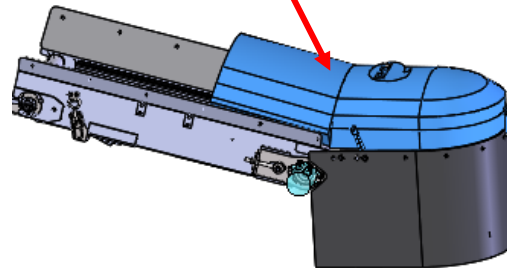
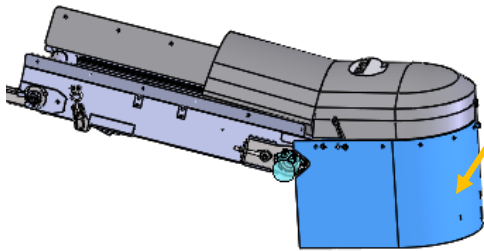
Tension the belts on both decks.

The belt tracking is controlled by the V-guide but the adjustment bolts should be tightened evenly on both sides to prevent excessive wear or friction on the belt. Ensure there is sufficient tension on the belt to ensure slippage doesn't occur but not so tight that there is excessive load on the hydraulic motors.

Start the machine and engage the separator, check that the belts are turning the right way.



Fit rear hoops with curtains and plastic hood on as shown.

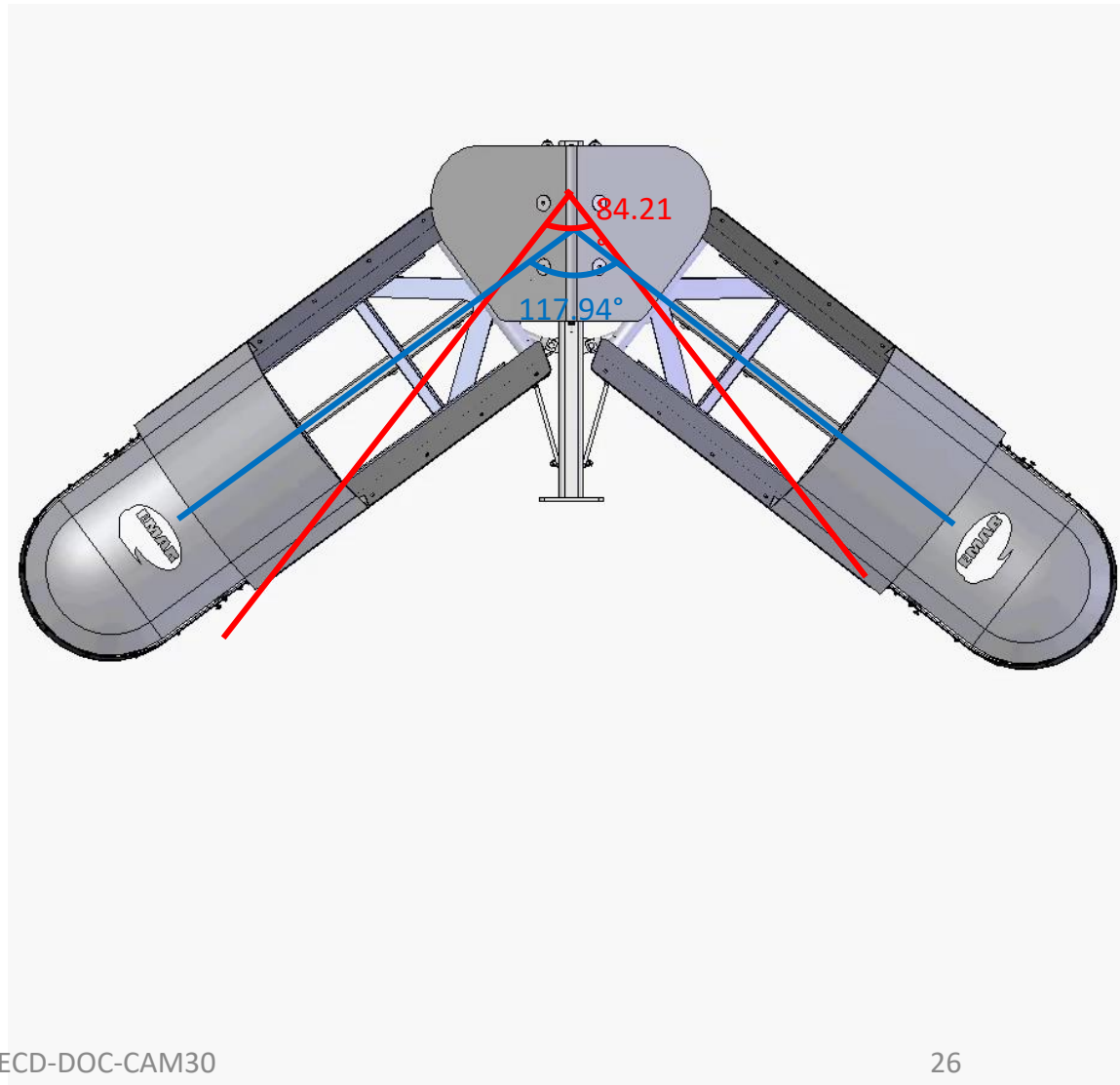
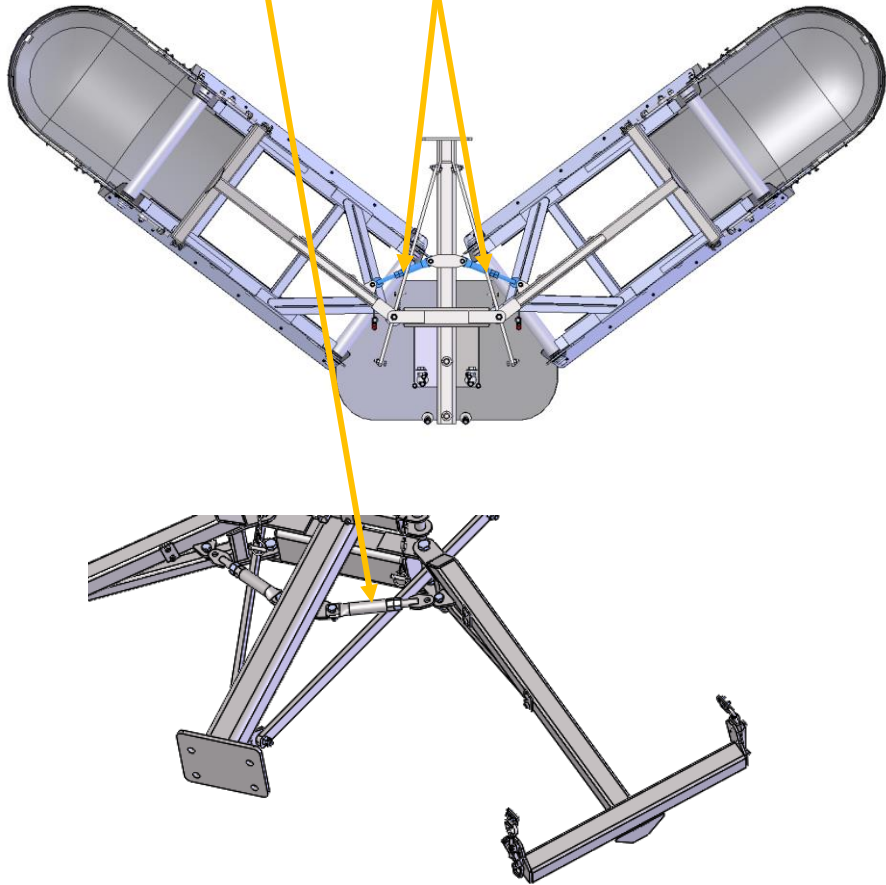


Note that the plastic hood fits on the inside of the hoop.



NOTE:
You may be required to trim the height of the rear rubber curtain to suit your requirements.

Adjust turnbuckle as required to obtain desired wheel track.



Trim hoods to fit

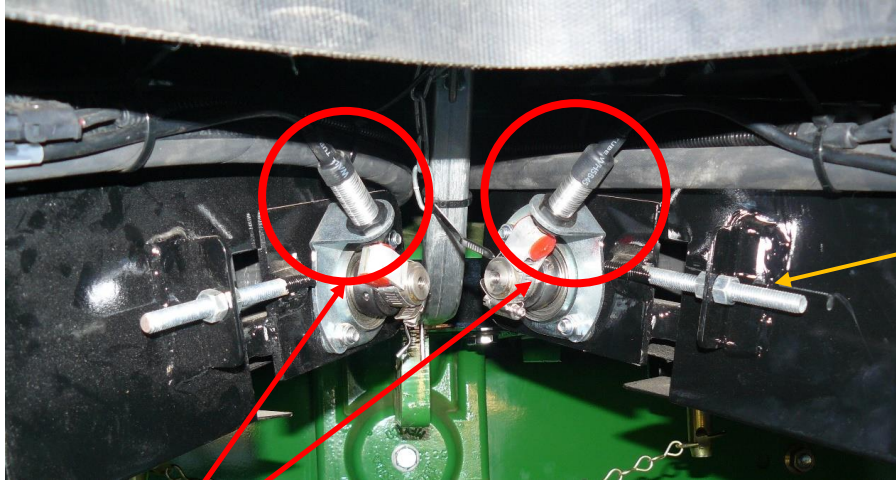


Trim the corner off the plastic hoods using approximate measurements as shown to fit

Installing the Electrics



Refer to drawing CHD-E005 in appendix for all items listed in this section



Note:
Idler roller adjuster bolts
(shown) are no longer required
on V-guided models

Fit the speed sensors to the top idler shafts (if not supplied fitted).

Fit the two extension harnesses to the speed sensors.

Wrap the hydraulic hoses and the wiring harness in the spiral wrap.

Then feed the hoses up to the flow control valve and filter housing, and attach to the hydraulic fitting.

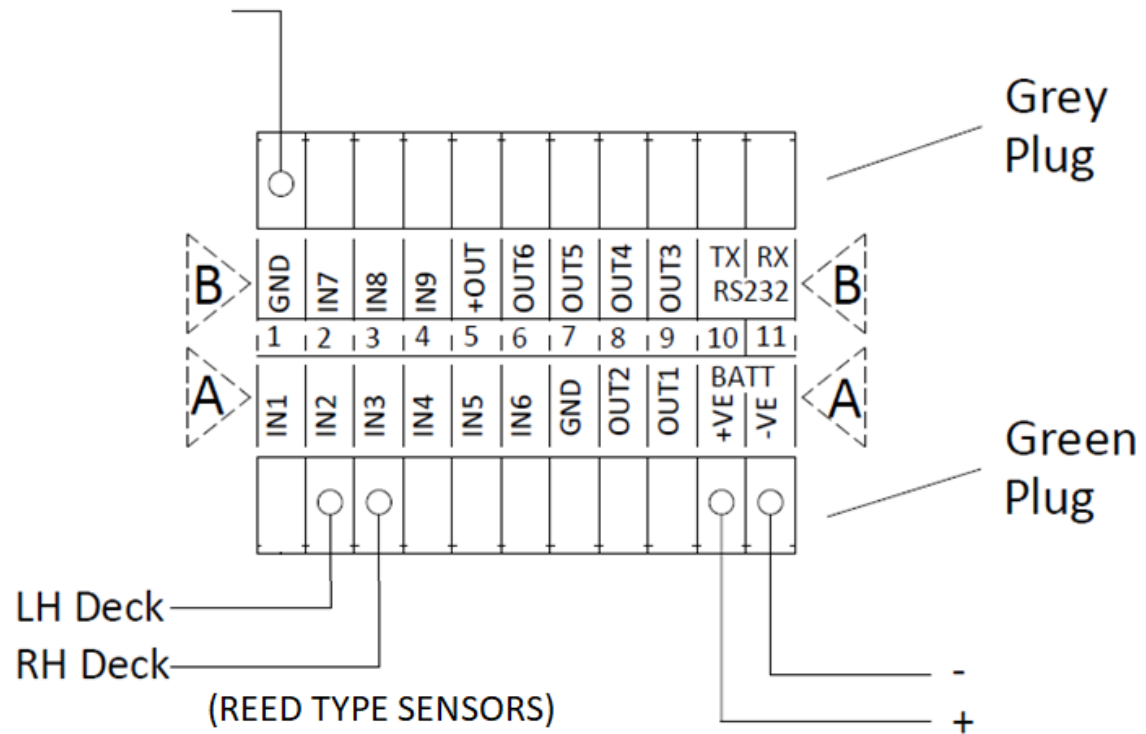
NOTE! When fitting the wiring harness to the hydraulic hose with the spiral wrap make sure there is slack in the wiring harness, so that you don't pull the wire out of the sensor.

Keep all LHS deck hoses & cables together and all RHS deck hoses & cables together so that it is easy to remove either deck to get into the back of the combine.

FARMSCAN MONITOR

JACKAL V3

Common Deck Wires



Fit the Farmscan Jackal monitor into the cab of the machine.

Run the wiring harness down out of the cab, and across to the left hand side of the machine, then back down to the where the new hydraulic quick release couplings have been installed.

Then plug the speed sensors into the harness.

Connect the monitor up as per the Farmscan Monitor Manual supplied and program the 2 x Tacho Shaft Speeds.

Minimum speed for the alarm should be set at 400rpm and maximum speed 1000rpm.

Ideal deck roller speed is between 600-800rpm.

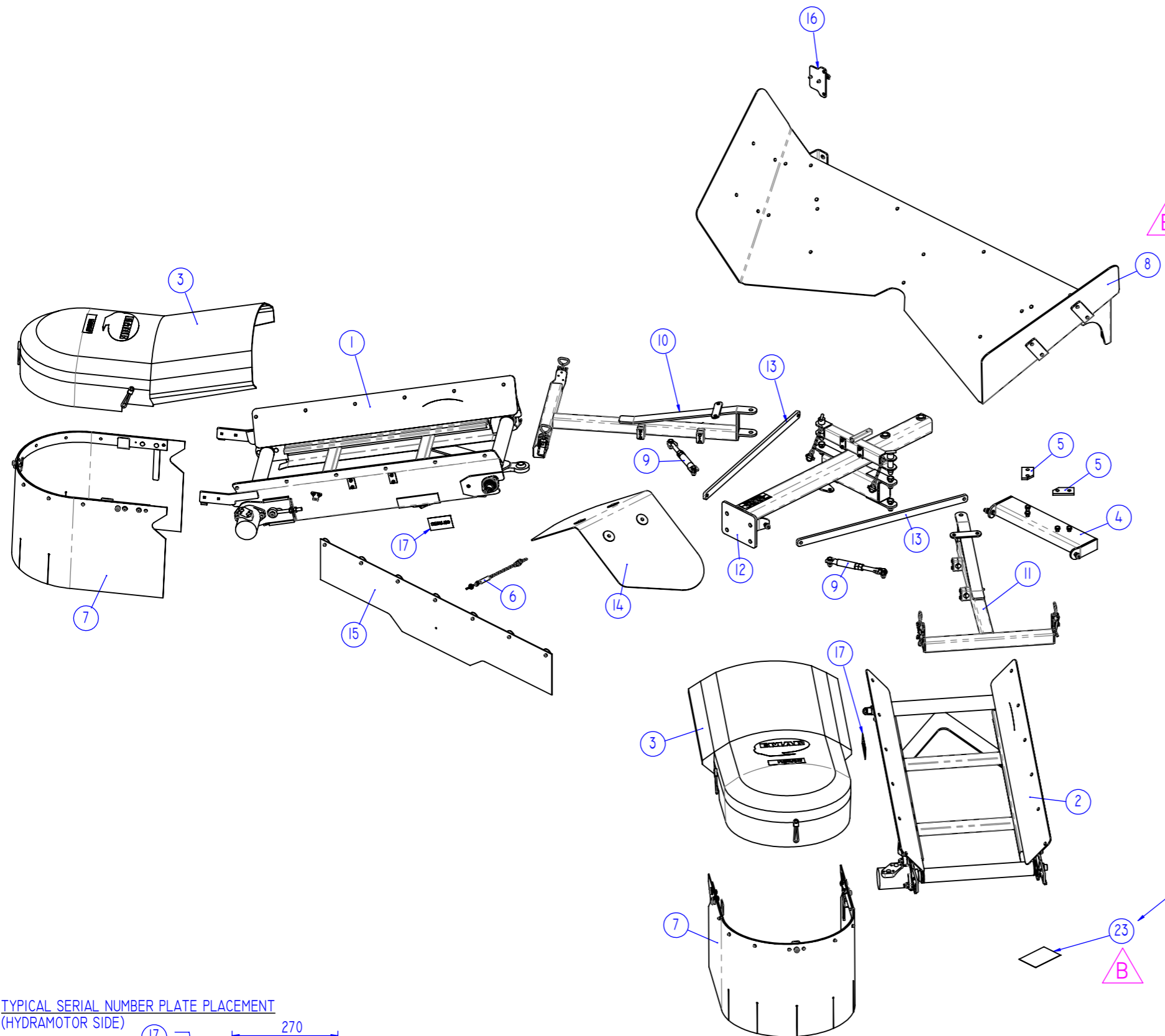
Maintenance

Recommended frequency	Action
Daily for 1 st 3 days of use	Monitor belt speeds to ensure stay identical
	Readjust conveyor belt tension
	Check for hydraulic leaks
Daily	Check condition of conveyor belts
Weekly	Check for hydraulic leaks
	Check conveyor belt tension
Preseason	Check condition of conveyor belts
	Check conveyor belt tension
	Check condition of bearings
	Check condition of shrouds
	Check condition of framework
	Check for hydraulic leaks
	Check condition of hydraulic hoses

Troubleshooting

Issue	Probable Cause	Remedy
Deck speed alarm sounding	Deck roller speed too high or low	Adjust speed on hydraulic flow controller
	Belt slipping	Readjust belt tension
	Monitor alarm set too high or low	Reset alarm speed
Deck speed not showing up on monitor	Wires incorrectly installed in monitor	Recheck wiring as per electrics section
	Monitor not programmed properly	Reprogram monitor as per monitor manual
	Sensor faulty	Replace sensor
Hydramotor seal leaking	Case drain not installed correctly	Ensure case drain goes directly to tank
	Seal worn or faulty	Replace seal
Hydraulic fittings leaking	Inadequate sealant on BSPT/NPT threads	Apply correct sealant as per hydraulic drawing
	Quick coupling O-ring damaged	Replace O-ring or coupling
Chaff not landing in Tramline	Deck angle adjustment incorrect	Adjust turnbuckles (CHD-1115)
	Deck speed incorrect	Adjust speed on hydraulic flow controller
Straw blockages in harvester	Excessively moist conditions	Wait until conditions dry out
		Install feed roller if available

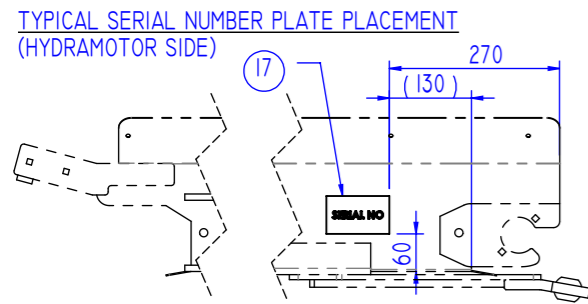
DIMENSIONS IN MILLIMETRES
DO NOT SCALE



ITEM NO.	QTY.	PARTNO	DESCRIPTION / MATERIAL
1	1	CHD-CV03L	CONVEYOR ASSEMBLY, 1190MM, LH
2	1	CHD-CV03R	CONVEYOR ASSEMBLY, 1190MM, RH
3	2	CHD-SHRD4	HOOD ASSEMBLY
4	1	CHD-1007K	BRACE MOUNTING BRACKET (INCL. FASTENERS)
5	2	CHD-1008	BACKING PLATE, CASE
6	1	CHD-1024	FRONT CURTAIN CHAIN/SPRING ASSEMBLY
7	2	CHD-1025	REAR HOOP ASSEMBLY
8	1	CHD-1098	SIEVE CHUTE ASSEMBLY, NH
9	2	CHD-1115	DECK POSITION TURNBUCKLE (INCL. FASTENERS)
10	1	ECD-1123V2K	CONVEYOR SUPPORT ARM V2, FULL KIT (LH ORIENTATION)
11	1	ECD-1123V2K	CONVEYOR SUPPORT ARM V2, FULL KIT (RH ORIENTATION)
12	1	CHD-1129MK	REAR HITCH FRAME, CASE MAV (INCL. FASTENERS)
13	2	CHD-1130N	TOW HITCH BRACE, CNH
14	1	ECD-1193	TOP HAT ASSEMBLY, CASE MAV
15	1	CHD-1064MK	REAR CURTAIN ASM, CASE MAV
16	1	ECD-1190	HYD VALVE BRKT ASM, CASE MAV
17	2	ECD-SNP	SERIAL NO. PLATE
18	1	CHD-E005	SENSOR ELECTRONICS, FARMSCAN WITH FEED WIRE (INCL. MONITOR, SENSORS, PICKUPS, 4 CABLES)
19	1	ECD-H011-DC	HYDRAULICS, CASE MAV, DECK COMPONENTS
20	1	ECD-H011-HC	HYDRAULICS, CASE MAV, HARVESTER COMPONENTS
21	1	ECD-H011-LC	HYDRAULICS, CASE MAV, LOOSE COMPONENTS
22	1	ECD-DOC-CAM30	FITTING INSTRUCTIONS - CASE MAV 30/40 SERIES
23	1	ECD-DECAL-HYD	WARNING DECAL, 150x100MM, HYDRAULICS

---ITEMS NOT SHOWN---

SUPPLY WITH FITTING INSTRUCTIONS.
DO NOT STICK TO ANY ITEM IN KIT.



REV.	DRAWING REVISION	DATE	BY	CHKD
A	ITEMS 12 & 14 CHANGED	16/08/2019	SBJ	SBJ
B	ITEMS 10-11 P/N'S CHG'D; ADDED ITEM 23	24/06/2020	WBT	SBJ

DRAWING NOTES:

TOLERANCES IF NOT SPECIFIED (COARSE SERIES)					
LINEAR:	NOMINAL DIMENSION				
OVER	30	120	400	1000	6000
TO	±0.5	±0.8	±1.2	±2.0	±3.0
TOL	±0.5	±0.8	±1.2	±2.0	±3.0
ANGULAR:					
FORMED:	±1°	OTHER: ±0.5°			

THIS DOCUMENT IS THE PROPERTY OF PRIMARY SALES AUSTRALIA. IT MUST NOT BE REPRODUCED, COPIED OR OTHERWISE COMMUNICATED TO ANY THIRD PARTY WITHOUT THE WRITTEN CONSENT OF PRIMARY SALES AUSTRALIA.

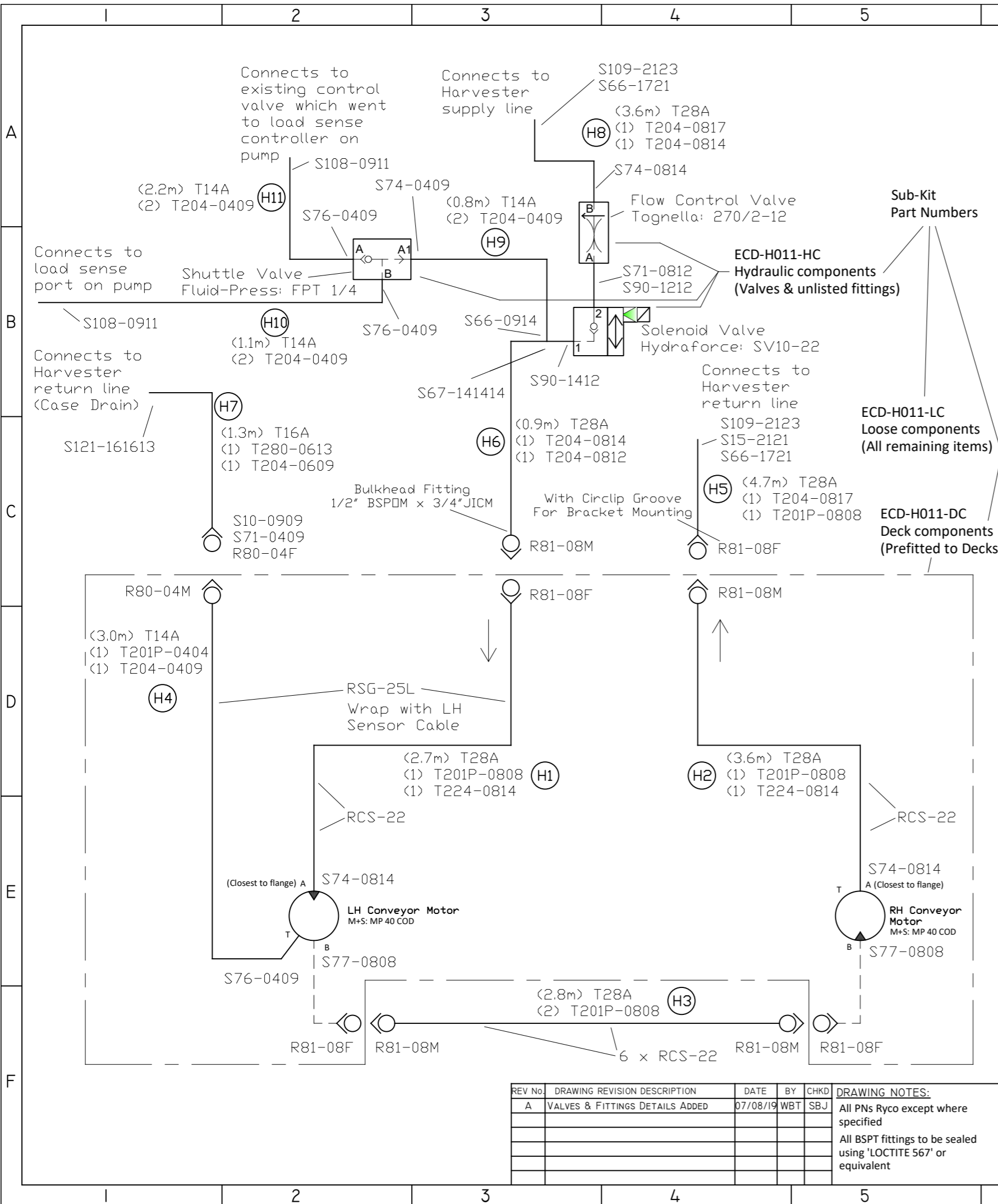
PRIMARY SALES AUSTRALIA

DRN BY: SBJ
DRN DATE: 11/7/19

CHKD BY: SBJ
CHKD DATE: 11/7/19

A3

TITLE		PART NO		WEIGHT(KG)	
CHAFF DECK CASE, 30/40 SERIES WITH MAV		ECD-CAM30		205.7	
DRAWING NO		ECD-CAM30		REVISION	
				B	



Ref Number	Description	Qty DC	Qty LC	Qty HC
R80-04M	Quick Coupling, Male, 1/4" BSPPF	1		
R80-04F	Quick Coupling, Female, 1/4" BSPPF		1	
R81-08M	Quick Coupling, Male, 1/2" x 1/2 BSPP	1	2	1
R81-08F	Quick Coupling, Female, 1/2" BSPPF (Incl. CIRCLIP GROOVE)	3		1
RCS-22	Hose Mounting Clamp Assembly, Single, 22mm	4	6	
RSG-25L	Spiral Guard, 25mm		4.0m	
S10-0909	Bulkhead, 9/16" JIC - 9/16" JIC			1
S15-2121	Elbow, 1,5/16 JIC x 1,5/16 JICF		1	
S66-0914	Reducer, 9/16" JIC - 7/8" JICF			1
S66-1721	Reducer, 1,1/16" JIC - 1,5/16" JICF			2
S67-141414	Tee, 7/8" JIC x 7/8" JICF x 7/8" JIC			1
S71-0409	Straight, 1/4 BSPOM x 9/16 JICF			1
S71-0812	Straight, 1/2 BSPOM x 3/4 JICF			1
S74-0814	Nipple, 1/2" BSPOM - 7/8" JICM	2		1
S74-0409	Nipple, 1/4 BSPP x 9/16 JIC			1
S76-0409	Elbow, 1/4 BSPOM x 9/16 JICM	1		2
S77-0808	Elbow, 1/2" BSPTM - 1/2" BSPOM	2		
S90-1212	Nipple, 3/4 JIC x 3/4 UNO			1
S90-1412	Nipple, 7/8 JIC x 3/4 UNO			1
S108-0911	Straight, 9/16" JIC - 11/16" ORFSM			2
S109-2123	Straight, 1,5/16" JIC - 1,7/16" ORFSF			2
S121-161613	Tee, 1" ORFSM x 1" ORFSF x 1,3/16" ORFSM		1	
	Bulkhead, 1/2" BSPOM - 3/4" JICM			1
H1	Hose Asm - T28A (2.7m) - T201P-0808 (BSPPM) x T224-0814 (JICF90)	1		
H2	Hose Asm - T28A (3.6m) - T201P-0808 (BSPPM) x T224-0814 (JICF90)	1		
H3	Hose Asm - T28A (2.8m) - (2) T201P-0808 (BSPPM)		1	
H4	Hose Asm - T14A (3m) - T201P-0404 (BSPPM) x T204-0409 (JICF)	1		
H5	Hose Asm - T28A (4.7m) - T201P-0808 (BSPPM) x T204-0817 (JICF)		1	
H6	Hose Asm - T28A (0.9m) - T204-0812 (JICF) x T204-0814 (JICF)		1	
H7	Hose Asm - T16A (1.3m) - T204-0609 (JICF) x T280-0613 (ORFSF)		1	
H8	Hose Asm - T28A (3.6m) - T204-0814 (JICF) x T204-0817 (JICF)		1	
H9	Hose Asm - T14A (0.8m) - (2) T204-0409 (JICF)		1	
H10	Hose Asm - T14A (1.1m) - (2) T204-0409 (JICF)		1	
H11	Hose Asm - T14A (2.2m) - (2) T204-0409 (JICF)		1	
270/2-12 GAS	Flow Control Valve (Tognella: 270/2-12 GAS or equivalent)			1
FPT 1/4	Shuttle Valve (Fluid-Press: FPT 1/4 or equivalent)			1
SV10-22	Solenoid Valve (Hydraforce: SV10-22 or equivalent)			1

Hardware				
ECD-1191	Quick Coupling Bracket			1
	M10x25mm Hex Bolt			2
	M10 Nyloc Nut			2
	Circlip, External 35mm			2

Required for Case MAV kits with hydraulic feed roller

REV NO.	DRAWING REVISION DESCRIPTION	DATE	BY	CHKD	DRAWING NOTES:
A	VALVES & FITTINGS DETAILS ADDED	07/08/19	WBT	SBJ	All PNs Ryco except where specified All BSPT fittings to be sealed using 'LOCTITE 567' or equivalent

Primary Sales Australia Copyright subsists in this drawing/document and such copyright is the property of Primary Sales Australia. Reproductions of this drawing/document or any part thereof without written consent of Primary Sales Australia is an infringement of that copyright.

©

A3

SCALENTS

DRAWN BY: SBJ 11/7/19

CHKD BY: SBJ 11/7/19

CHAFF DECK HYDRAULICS, CASE MAV

DRAWING NUMBER: ECD-H011

REV No: A

Wire Colour Legend	
Black	BK
White	WE
Red	RD
Green	GN
Yellow	YW
Blue	BE
Orange	OE
Brown	BN
Grey	GY
Pink	PK
Purple	PE
Lime	LE
Tan	TN
Cyan	CN

Note:
Pin-Wire connections shown Pin Out
I.e. Viewed from front (Outside) of connector

REF	QTY	PART No.	DESCRIPTION / MATERIAL
1	1	-	CABLE ASSEMBLY, MONITOR
2.1	1	CHD-E004 (ITEM 1)	CABLE ASSEMBLY, MONITOR
2.2	1	CHD-E004 (ITEM 2)	CABLE ASSEMBLY, LH SENSOR
2.3	1	CHD-E004 (ITEM 3)	CABLE ASSEMBLY, RH SENSOR
3	1	-	HARVESTER MONITOR, FARMSCAN JACKAL V3, C/W SENSORS, HARDWARE PN: JACKAL-ESP (AA-110G-D)
3.1	1	-	MONITOR
3.2	1	-	POWER CABLE
3.3	1	-	SENSOR (WITH DEUTSCH PLUGS)
3.4	1	-	SENSOR PICKUP MAGNET
3.5	1	-	SENSOR PICKUP CLAMP

A

A

B

B

C

C

D

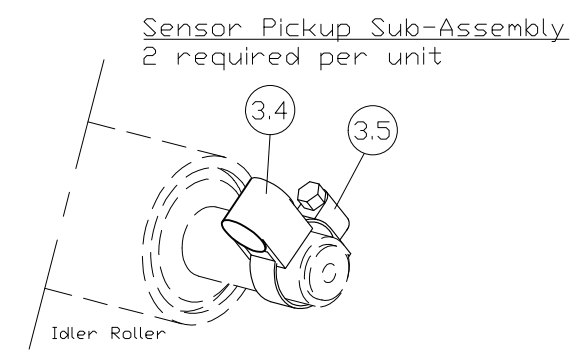
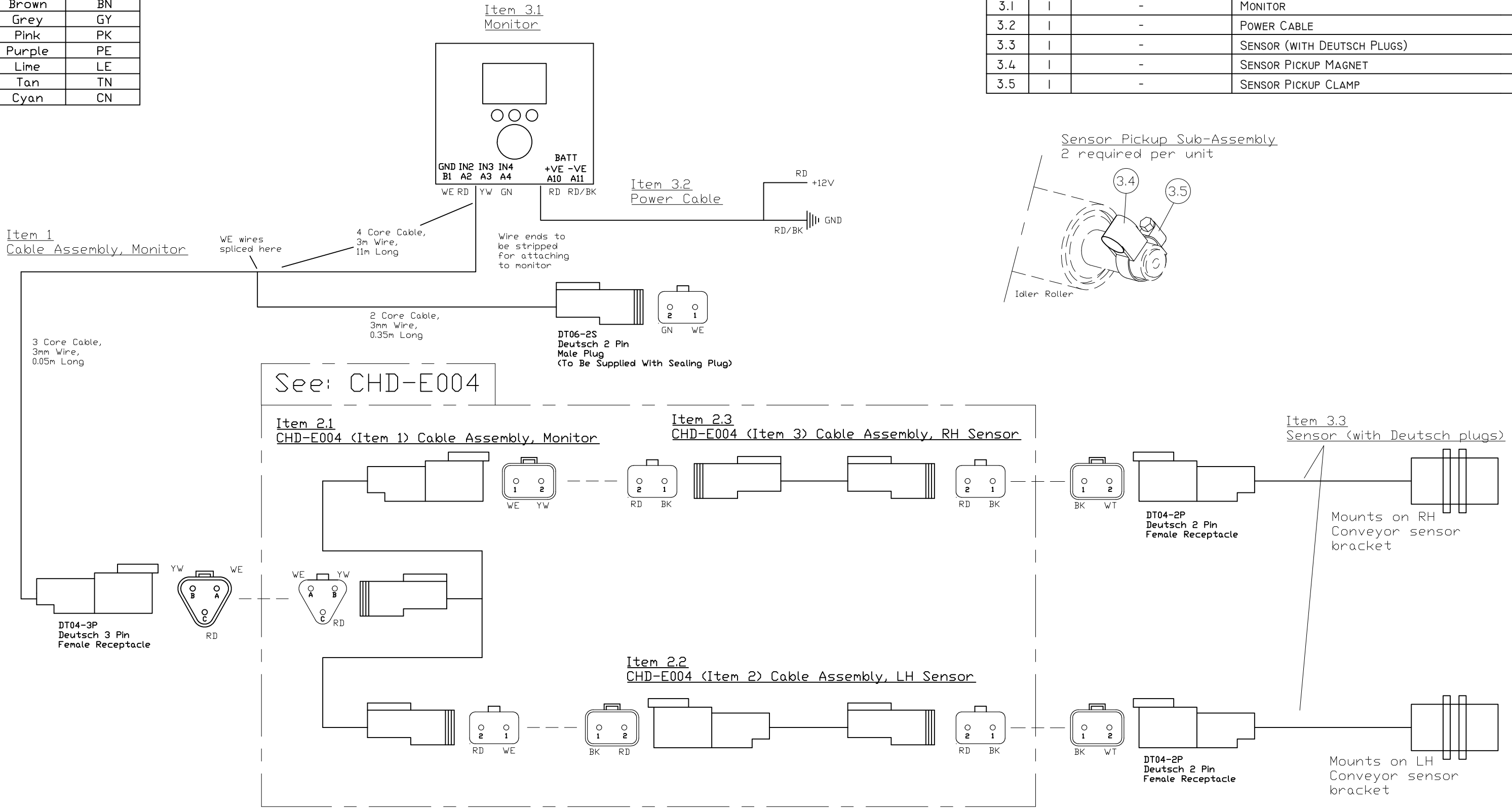
D

E

E

F

F



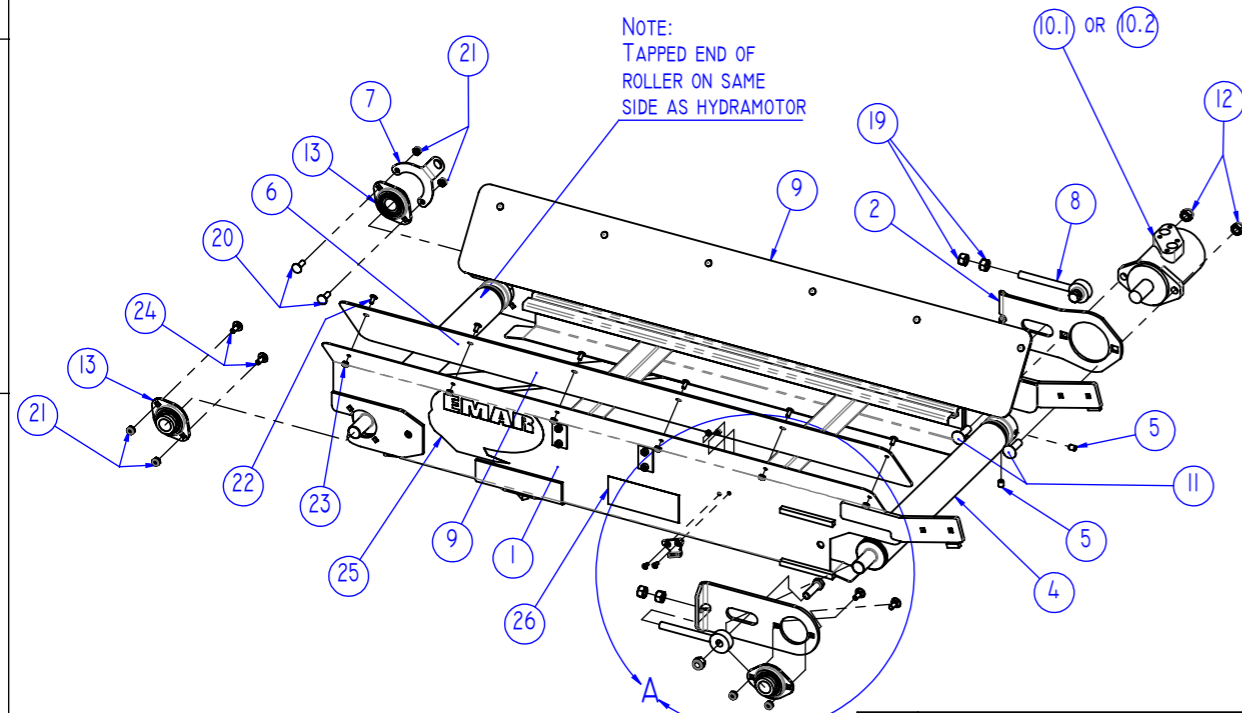
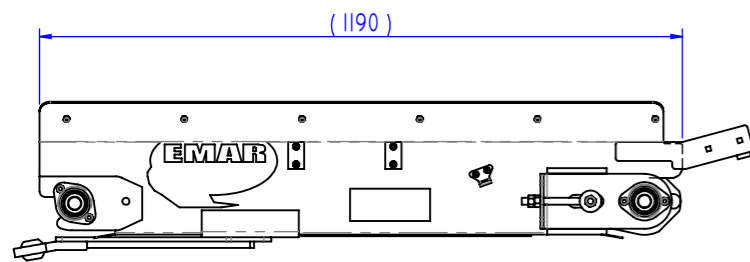
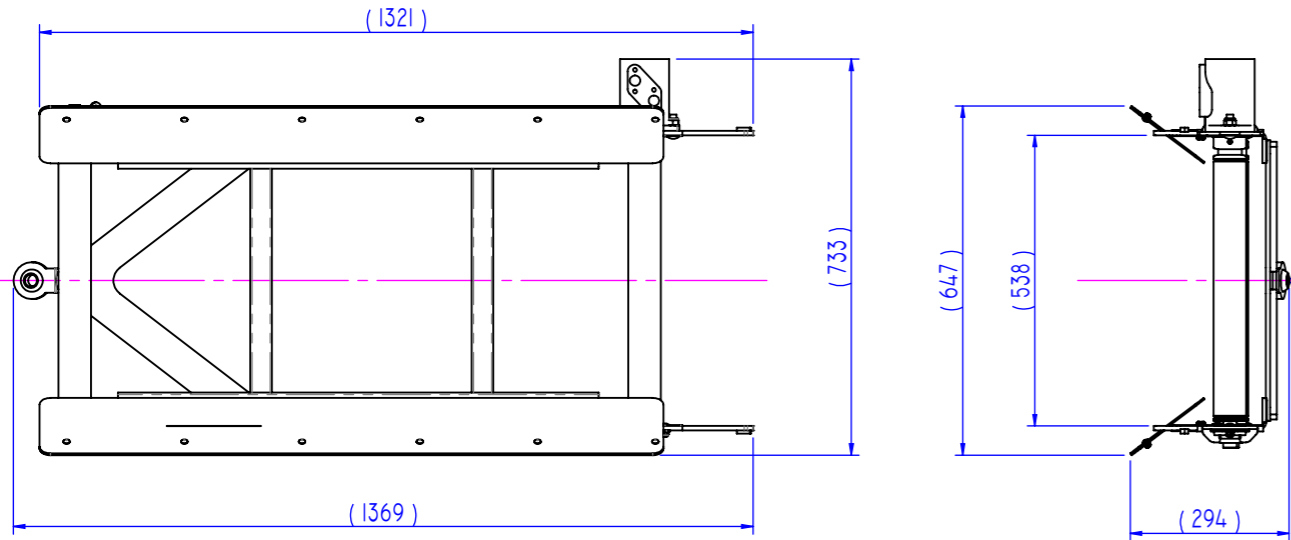
See: CHD-E004

REV No.	DRAWING REVISION DESCRIPTION	DATE	BY	CHKD
	SUPERSEDES CHD-E002			
A	ITEM 1 3PIN CONNECTOR PN CORRECTED	12/09/17	SBJ	AW
B	PIN LABELS CHANGED FOR JACKAL V3	14/12/17	SBJ	WBT

DRAWING NOTES:
-
©
Primary Sales Australia Copyright subsists in this drawing/document and such copyright is the property of Primary Sales Australia. Reproductions of this drawing/document or any part there of without written consent of Primary Sales Australia is an infringement of that copyright.

A3		CHAFF DECK	
SCALETNS		SENSOR WIRING, FARMSCAN	
DRAWN BY	WBT	22/5/17	DRAWING NUMBER
CHKD BY	SBJ	25/5/17	CHD-E005
			REV No.
			B

DIMENSIONS IN MILLIMETRES
DO NOT SCALE



K

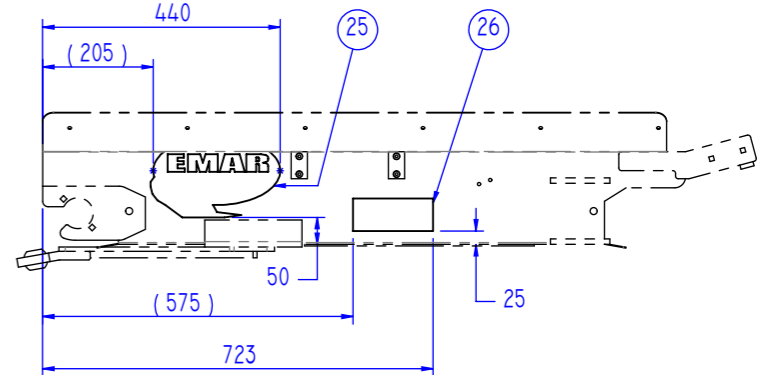
L

K

DETAIL A

ITEM NO.	CHD-CV03L QTY.	CHD-CV03R QTY.	CHD-CV03HL QTY.	CHD-CV03HR QTY.	PARTNo	DESCRIPTION / MATERIAL
1	1	1	1	1	CHD-CV03-TRV4	CONVEYOR TRAY, 1190MM, V-GUIDED
2	1	1	1	1	CHD-CV-RMDIV2	DRIVE ROLLER HYDRAMOTOR MOUNT
3	1	1	1	1	CHD-CV-RMD2V2	DRIVE ROLLER BEARING MOUNT
4	1	1	1	1	CHD-CV-RDV3	DRIVE ROLLER WITH V-GROOVE
5	2	2	2	2	-	SOCKET SET SCREW FLAT POINT 3/8 UNC x 1/2"
6	1	1	1	1	CHD-CV-RIV3	IDLER ROLLER WITH V-GROOVE
7	1	1	1	1	CHD-CV-RSB	ROLLER SPEED SENSOR BRACKET
8	2	2	2	2	CHD-I049	CONVEYOR EYEBOLT
9	2	2	2	2	CHD-I071V2	CONVEYOR SIDE SHROUD, 1190MM
10.1	1	1	-	-	HYD-MP80COD	HYDRAMOTOR, M+S PN: MP40 COD
10.2	-	-	1	1	UCA-H01	HYDRAMOTOR, M+S PN: MP30 COD
11	2	2	2	2	B-I12-12-CH-G5	CUP HEAD BOLT 1-2" UNC x 1.5" G5
12	4	4	4	4	B-NI2-UNC-NYL	NYLOC NUT - 1-2" UNC
13	3	3	3	3	-	FLANGE BEARING UNIT, 25MM, SKF PN: PFT 25 TF
14	2	2	2	2	-	OJOP CATCH PLATE, UES PN: 41Z
15	4	4	4	4	-	SOCKET C/SUNK HEAD SCREW - M5 x 12 G8.8
16	-	-	-	-	-	(DELETED)
17	4	4	4	4	B-NM05-NYL	NUT - NYLOC M5 Z/P
18	2	2	2	2	B-I34-12-UNC-G5	HEX BOLT 1-2" x 1.3-4" UNC G5 ZP
19	4	4	4	4	-	HEX NUT 1-2" UNC
20	2	2	2	2	B-M08-025-CH	CUP HEAD BOLT M8 x 25MM
21	6	6	6	6	B-NM08-NYL	NUT - NYLOC M8 Z/P
22	12	12	12	12	B-M06-012-RB	BOLT, ROOFING, COMB. HEAD - M6 x 12MM ZP
23	12	12	12	12	B-NM06-NYL	NUT - NYLOC M6 Z/P
24	4	4	4	4	B-M08-020-CH	CUP HEAD BOLT M8 x 20MM
25	1	1	1	1	ECD-DECAL-LOGO	EMAR Logo DECAL, 240x150MM
26	1	1	1	1	PSA-DECAL-LOGO-I48X60	PSA Logo, 148x60MM
27	1	1	1	1	W-ECD-VG20-PS	BELTING, V-GUIDED, 20", 2.38M LENGTH
28	1	1	1	1	W-ECD-VG20-JN-PS	BELTING JOINER, 20"

DECAL PLACEMENT:
(LH DECK SHOWN - DECALS ON NON-HYDRAMOTOR SIDE)
(RH DECK OPPOSITE)



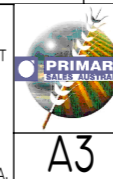
PART NUMBER	DESCRIPTION	ORIENTATION	NOTE
CHD-CV03L	LEFT HAND VERSION	AS SHOWN	MP40 COD MOTOR
CHD-CV03R	RIGHT HAND VERSION	OPPOSITE HAND	
CHD-CV03HL	LEFT HAND VERSION	AS SHOWN	MP30 COD MOTOR
CHD-CV03HR	RIGHT HAND VERSION	OPPOSITE HAND	

REV.	DRAWING REVISION	DATE	BY	CHKD
A	ITEM 16 REPLACED - WAS CHD-CV-ESA	08/05/2015	SBJ	AMC
B	CORRECTED LENGTH OF ITEM 27	12/06/2015	SBJ	AMC
C	ITEMS 1-4, 9-11 CHNGD, 29 ADDED, 18,20,21,25 QTY CHNGD	15/06/2015	SBJ	AMC
D	CORRECTED LENGTH OF ITEM 27	30/06/2015	SBJ	WBT
E	BELT NOW V-GUIDED, ITEMS 1, 10 & 11 CHANGED TO SUIT	24/05/2016	SBJ	AMC
F	ITEM 1, 12 & 14 CHG'D; IDLER ADJUSTER PARTS REMOVED; HYDRAMOTOR DELETED, ALREADY IN HYD. SCHEMATIC	06/02/2018	WBT	SBJ
G	ITEM 18 CHANGED FROM PFT 25 FM TO PFT 25 TF	28/06/2018	ELKT	SBJ
H	ENTIRE BOM REWORKED FOR RESTRUCTURE PROJECT	12/03/2019	WBT	SBJ
J	ADDED CONFIGS FOR MP30 COD MOTOR; ITEM 20 & ITEM 24 QTY'S CHG'D	17/06/2019	WBT	SBJ
K	ITEM 15 CHG'D; ITEM 16 DELETED	01/08/2019	WBT	SBJ
L	ITEM 26 P/N CHG'D	26/06/2020	WBT	SBJ
M	ITEM 7 LOCATION CORRECTED, ITEM 19 MOVED	13/01/2022	IUR	SBJ

DRAWING NOTES:

TOLERANCES IF NOT SPECIFIED (COARSE SERIES)	
LINEAR:	NOMINAL DIMENSION
OVER	30 120 400 1000 6000
TO	±0.5 ±0.8 ±1.2 ±2.0 ±3.0 ±5.0
TOL	
ANGULAR:	
FORMED:	±1° OTHER: ±0.5°

THIS DOCUMENT IS THE PROPERTY OF PRIMARY SALES AUSTRALIA. IT MUST NOT BE REPRODUCED, COPIED OR OTHERWISE COMMUNICATED TO ANY THIRD PARTY WITHOUT THE WRITTEN CONSENT OF PRIMARY SALES AUSTRALIA.



DRN BY	DRN DATE	CHKD BY	CHKD DATE
SBJ	9/9/14	AMC	10/9/14

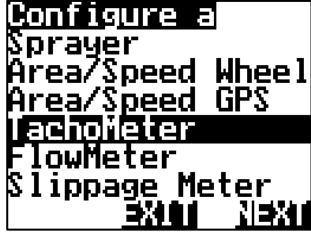
TITLE		CHAFF DECK CONVEYOR ASSEMBLY, 1190MM	
PART NO	-	WEIGHT(KG)	46.4
DRAWING NO	CHD-CV03	REVISION	M



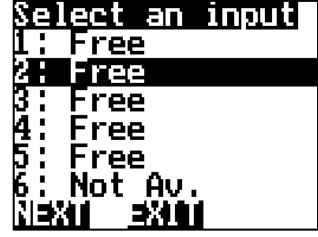
Press **SETUP**



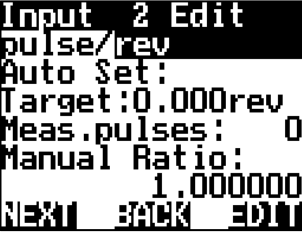
Select Wizard
Press > **SELECT**



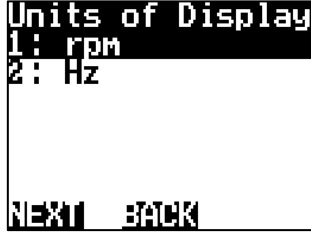
Select Tachometer
Press > **NEXT**



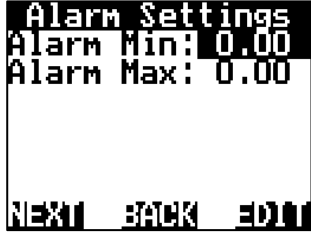
Select Input 2: Free
Press > **NEXT**



Press > **NEXT**



Press > **NEXT**



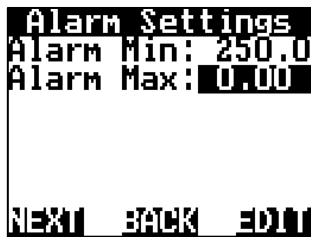
Press > **EDIT** to change the Alarm Min Value



Press the “LEFT” arrow 2 times (This will add 2 more “0” to the value.)



Using the “Up/Down/Left/Right” arrows, change the value to 250.
Press > **EXIT**



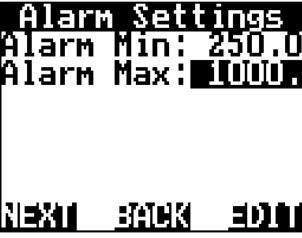
Press the “Down” arrow to highlight Alarm Max Value.
Press > **EDIT**



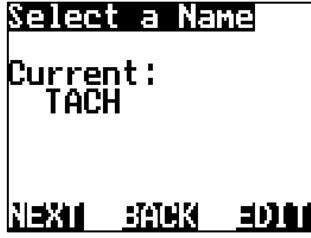
Press the “LEFT” arrow 3 times (This will add 2 more “0” to the value.)



Using the “Up/Down” arrows, change the value to 1000.
Press > **EXIT**



Press > **NEXT**



Press > **EDIT** to change the name of the Input



Using the “Up/Down/Left/Right” arrows, change the value to LH DECK.
Press > **EXIT**



Press > **NEXT**

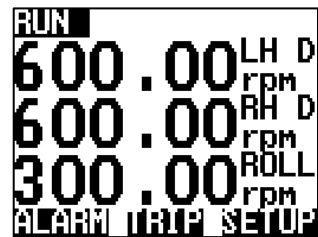


Press > **NEXT**



Setup complete & returns to **RUN SCREEN**

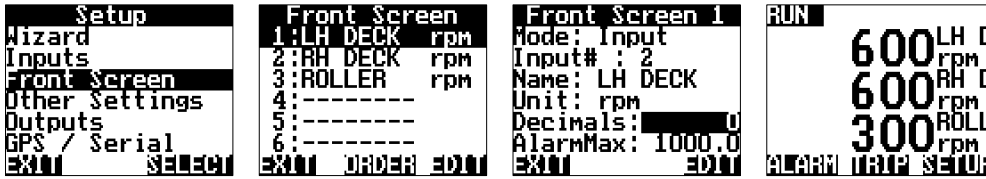
This completes the Wizard Setup for:
Input 2: (LH DECK)
Repeat the procedure with the following changes
Input # 3 (RH DECK)
Input # 4 (ROLLER)



Common Questions & Answers

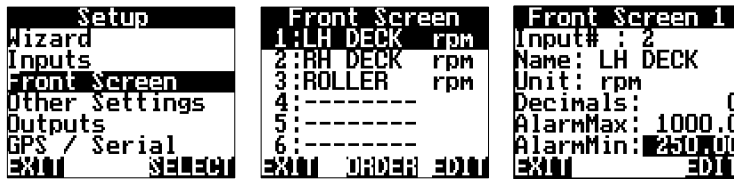
How do I change the decimal place values?

Press **SETUP** > Down arrow to “**Front Screen**” & press **SELECT** > “Select the line to edit” > Press **EDIT** > “Scroll down to Decimals” and use the Left/Right arrows to change the Decimal value required > Press **EXIT (3 Times)** to return to the **RUN SCREEN**



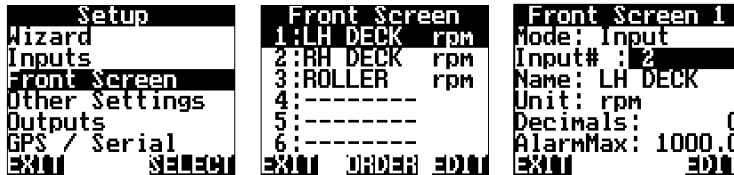
How do I edit the Alarm set points?

Press **SETUP** > Down arrow to “**Front Screen**” & press **SELECT** > “Select the line to edit” > Press **EDIT** > “Scroll down to “**AlarmMax:**” or “**AlarmMin:**” > Press **EDIT** and change the alarm points required > Press **EXIT (3 Times)** to return to the **RUN SCREEN**



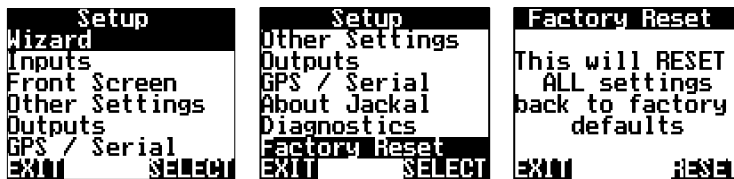
I think one of the inputs might be faulty. Can I easily change the input without doing the wizard or resetting the Jackal and losing my settings?

Press **SETUP** > Down arrow to “**Front Screen**” & press **SELECT** > “Select the line to edit” > Press **EDIT** > Down arrow “once” to “**Input#**” > Press **EDIT** or **LEFT/RIGHT** arrows and change to the new input number > Down arrow to “**Unit**” > Press **EDIT** or **LEFT/RIGHT** arrows and change to “**rpm**” > Press **EXIT (3 Times)** to return to the **RUN SCREEN**



I've made a mistake during the setup. Can I start again?

Press **SETUP** > Up Arrow to “**Factory Reset**” & press **SELECT**. Confirm the Message by pressing **RESET**. Cycle power on the Jackal & start the wizard again.



Jackal Sensor Connections – Please note the 2 versions

- 2 Wire: Reed Type Sensor with magnet – Ground & Signal
- 3 Wire: Proximity Type Sensor – Ground, Signal & Power

